

FUJITSU



For over 35 years, Fujitsu has been
making the hottest places cool and
the coolest places more comfortable.

**Mini-Split
Air Conditioners
and Heat Pumps**



Halcyon 

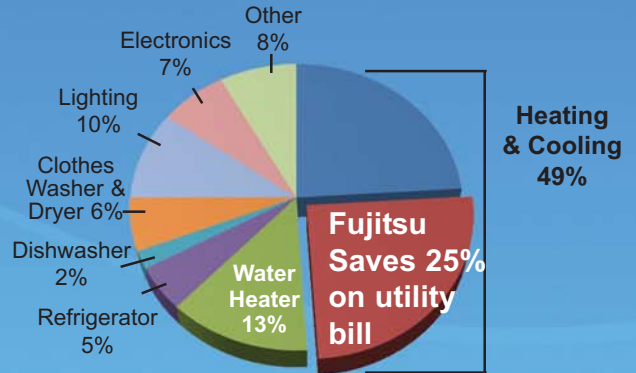


Fujitsu: The Smart Choice in Whole Home Comfort

As much as half of the energy used in your home goes to heating and cooling. So making smart decisions about your home or business' heating and air conditioning system can have a big effect on your utility bills — and your comfort.

Where Does My Money Go?

If your average annual utilities are \$4,200, Fujitsu can save you \$1,050 annually or \$10,500 in 10 yrs!*



How Does a Mini-Split Work?

What is a Mini-Split?

Like your refrigerator, heat pumps use electricity to pump refrigerant and transfer heat from one space to another. When we transfer heat from within our home to the outdoors, we call it "air conditioning". Conversely, when we transfer heat from the outdoors to within the home, we call it a "heat-pump".

*Savings may vary based on model selected, hours of operation and geographical location. Example given based on 26-SEER system versus 13-SEER system.

Unit Can Be Showcased...

Wall mounted units eliminate the need for ductwork, mount high on a wall and deliver all of the cooling you pay for.

Heat Pumps Provide Heat When it is Chilly...

Because refrigerant is naturally much colder than outdoor temperatures even on a very cold day, it actually absorbs heat from outdoors, and transfers the heat it absorbed outside to within your home. The refrigerant's physical properties do this naturally. What you pay for is the electricity to pump refrigerant via copper tubing from outdoors to indoors. Because we move the heat rather than create it (as electric baseboard or resistant heat does), we can deliver up to 4 times the heat for the energy we consume!



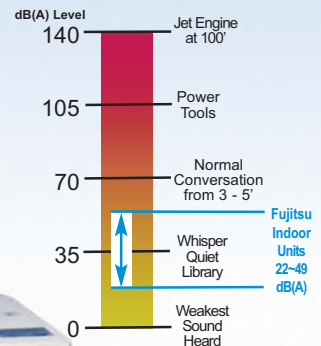
evaporator/
fancoil (indoor)

refrigerant lines,
electric, drain

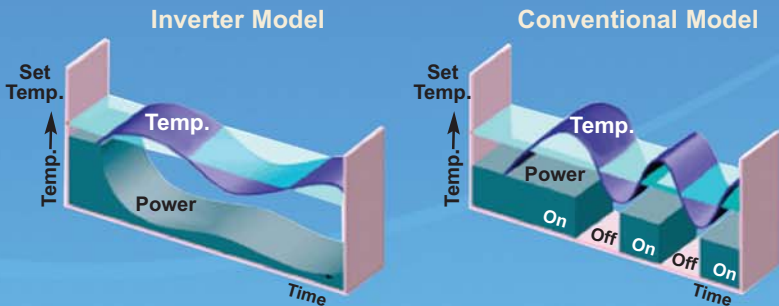
compressor/
condenser
(outdoor)

Flexible and Quiet

Mini splits offer flexibility because they can be suspended from a ceiling, mounted flush behind a drop ceiling, hung on a wall or floor-standing. Ductless heat pumps allow for a peaceful inside environment by enabling the contractor to install components like compressors and motors outdoors.



Inverter Technology



What is an Inverter?

Inverter components allow an outdoor unit to vary its speed and output to match your comfort needs.

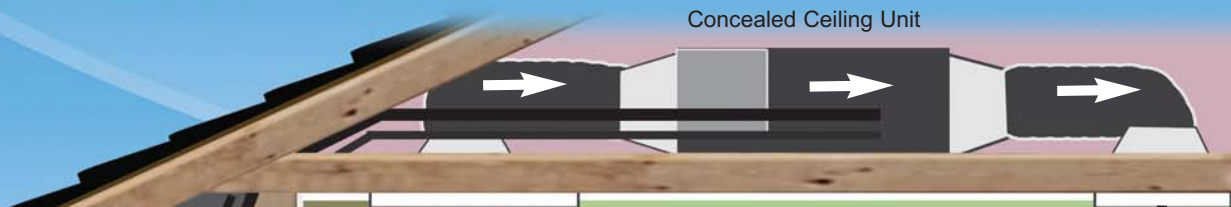
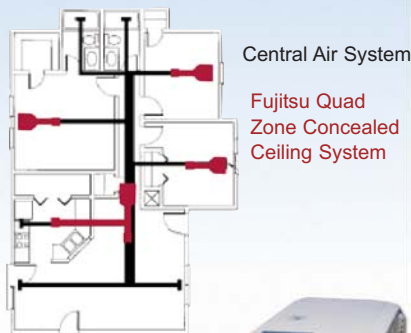
Inverter Benefits

- More Heat at lower outdoor temperatures
- Lower RPMs = quieter operation
- Desired temperature in half the time
- Up to 30% more efficient
- Stable temperature

The built-in Inverter controls the speed of the compressor. The Inverter Power Module uses electrical components to switch and chop created DC to make simulated AC at the required frequency and voltage that drives the compressor. Compared to the common on/off controlled compressor, the inverter driven compressor runs at the proper revolution to provide the required capacity. When maximum capacity isn't needed, compressor revolution and power decreases, increasing system efficiency. "Soft start" reduces the instantaneous peak demand associated with AC equipment starts. The compressor starts at minimum speed, avoiding high inrush current associated with standard compressors.

Ductless or Mini-Duct

Mini splits have little-to-no ducting. Central Air duct losses can easily account for more than 30% of energy consumption, especially if the ducts are not sealed tight or in an unconditioned space such as an attic or crawlspace.



... Or Hidden
 Concealed ceiling type units are mounted above a ceiling or in a framed enclosure below a ceiling, so only the grilles show for a clean look. They require minimal ductwork.

Air Conditioners Provide Cooling When It's Warm.

Come spring and summer, simply reverse the process and put the same system into "cooling mode" and transfer heat from indoors to the outside. For many climates, the advanced technology that goes into these units creates a far more cost effective alternative to either gas or oil-fired units for heat, or a central ducted system for air conditioning. Fujitsu's mini-splits come in both cooling-only models or heat pumps, which provide both heating and cooling.



Where Can Mini-Splits Be Used?

Older homes • New construction homes • Schools • Places of worship
Hospitals and medical facilities • Restaurants • Computer rooms
Hotels and motels • Car washes • Convenience stores



A Variety of Styles and Sizes

Energy Efficient Wall Mount

Houses, Apartments, Condominiums, Multi-Family Units

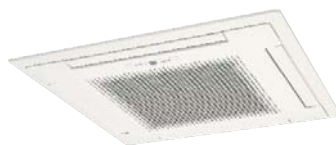
The high efficiency of these systems helps them pay for themselves by slashing electrical costs. Strong, quiet and efficient DC motors are used both indoors and outdoors. High performance fan blades, condensers and evaporators combined with variable speed inverter-driven compressors makes for unmatched performance. Variable speed compressors automatically adjust to fluctuating room capacity requirements.



Flush Mount - 4 Way Air Flow

Restaurants, Conference Rooms, Computer Rooms

Mounting flush with a suspended ceiling, our ceiling cassettes can be recessed above with minimum clearance. When adequate clearance is not available our slender fit feature drops the indoor unit by 1-3/8" with a clean look providing additional clearance above the ceiling making them one of the slimmest cassettes available. Couple that with advanced design features like a built in condensate pump, knockouts available for field supplied branch ducts and automatic change-over from cooling to heating.



Fast food chains • Fire houses • Police stations • Oil rigs • Bars
 Sunrooms and additions • Warehouses • Nursing homes
 ATM vestibules • Small offices...

...Just about any place that requires comfort!

Zoning Capability

Doctors' Offices, Nursing Homes, Residential Housing

Fujitsu's multi-zone mini-split heat pump systems let contractors select either a 24 or 36,000 BTU outdoor unit combined with 9,000, 12,000 or 18,000 BTU wall mounted, compact cassette or concealed ceiling type indoor units to create the perfect climate control system for almost any size space. Create 116 different systems with only 11 components. Mix-and-match flexibility of evaporator type and capacity allows you to choose the indoor unit that best fits the application, whether it be hidden or showcased.



Fresh Air Intake

Schools, Churches, Warehouses, Large Spaces

Fujitsu has an attractive way to accommodate difficult-to-cool areas with a slim universal system that can be suspended from the ceiling, placed low on the wall or rested on the floor. For areas when floor and wall space is restricted, Fujitsu's ceiling suspended system 36RSLX (ceiling mount only) can be partially recessed. Universal and ceiling suspended systems can access "fresh air".



Multi-Zone Systems for Whole Home Comfort

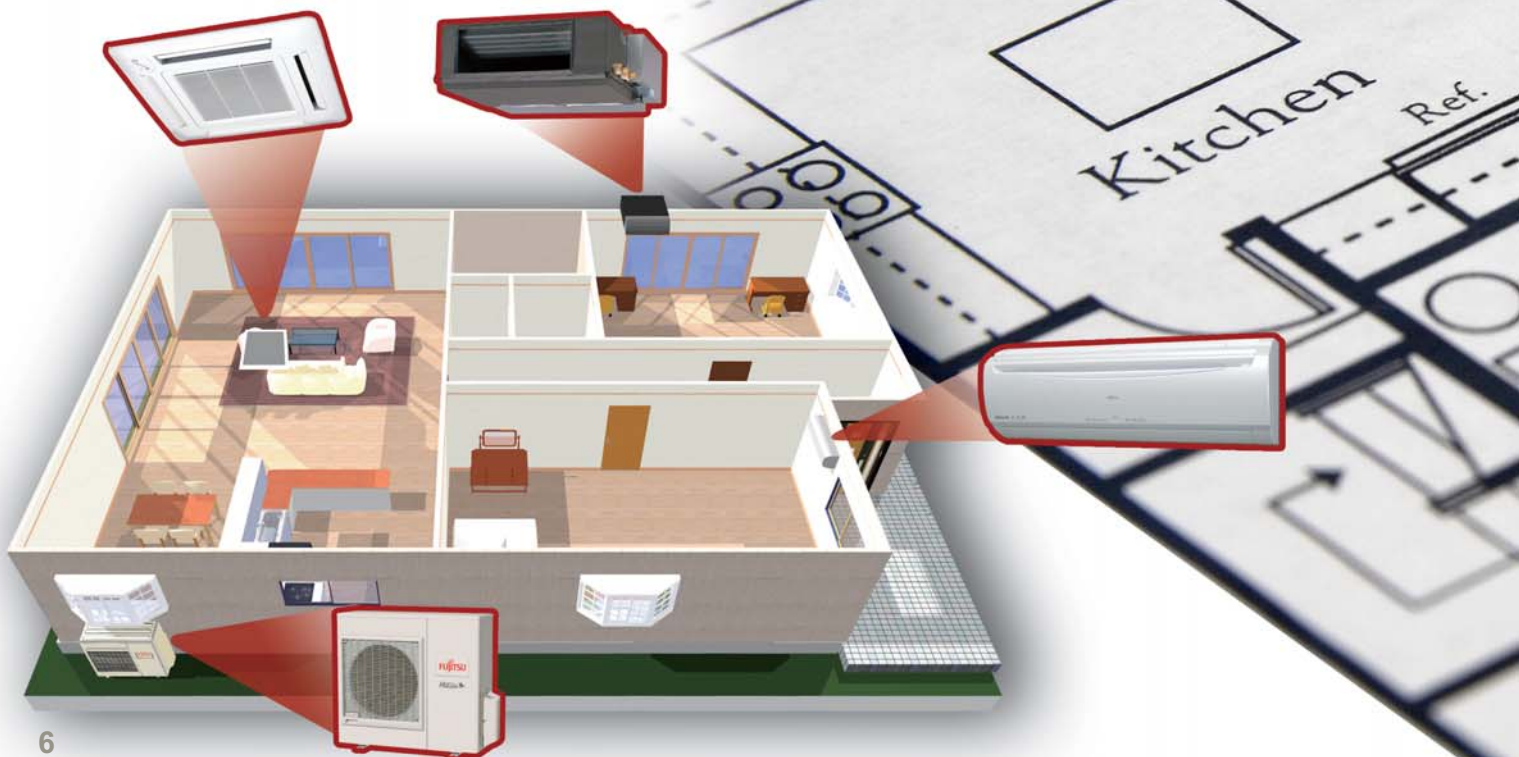
Multi-Zone Systems are one of today's most advanced forms of air conditioning. One outdoor unit can power up to 4 indoor units simultaneously. Fujitsu Multi-Zone Systems are quick & easy to have installed and are ultra quiet as well as highly energy efficient.

- Each indoor unit can be operated independently via remote control
- Choose from a variety of indoor unit styles
- Provide both heating and cooling (not simultaneously)
- High energy efficiencies
- Quiet operation

Wall Mounted

Stylish, slim and elegant, wall mounted units are designed to complement any interior décor.

- Compact size
- I.A.Q. plasma filter
- Wireless remote control
- Automatic swinging louvers



Whole Home Cooling and Heating



Concealed Ceiling

Mounted in a ceiling or in a framed enclosure below a ceiling. They use minimal ductwork and remain very energy efficient.

- Concealed and out of sight
- Look of central air with the efficiency of a mini-split
- Less ducts = higher efficiency

Wall Mounted

They mount high on a wall, out of sight and do not require ductwork, increasing energy efficiency.

- Quiet operation
- Easy maintenance
- High delivered efficiency means lower utility bills



Compact Cassette

Cassettes are extremely discreet, with only the grille showing in the ceiling. They use the latest fan technology to distribute the conditioned air evenly.

- Wired remote controller (wireless optional)
- Powerful turbo fan operation
- Fits into a standard ceiling tile

Features

	9CQ	9RL	9RLS	12CQ	12RL	12RLS	15RLQ	18CL	18RLQ	18RLXS	24CL	24RLXS	30CLX	30RLX	36CLX	18RULX	24RULX	36RSLX	18RCLX	24RCLX	36RCLX	42RCLX	Multi-zone: Wall	Multi-zone: Cassette	Multi-zone: Ducted
SEER	14	20	26	13	20	25	20	19	19	19	18	18	15	17.5	15	16	15	14	16	15	14	15	16.5 [^]	16.5 [^]	15 [^]
HSPF	-	10	12	-	10	12	10	-	10	10	-	10	-	9.5	-	8.5	8.5	8.5	8.5	8.5	8.5	8.5	9 [^]	9.4 [^]	8.6 [^]
Plasma Filter	●			●			●		●														●		
Apple Catechin Filter		●			●			●		●		●		●											
Ion Deodorizing Filter		●	●		●	●		●		●		●		●											
Sleep Timer	●	●	●	●	●	●	●	●	●	●	●	●	●	●	●	●	●	●	●	●	●	●	●	●	●
24 Hour Timer	●	●	●	●	●	●	●	●	●	●	●	●	●	●	●	●	●	●	●	●	●	●	●	●	●
Weekly Timer	□	□	□	□	□	□	□	□	□	□	□	□	□	□	□	□	□	□	□	□	□	□	□	□	□
Dry Mode	●	●	●	●	●	●	●	●	●	●	●	●	●	●	●	●	●	●	●	●	●	●	●	●	●
Auto Louver: Up/ Down	●	●	●	●	●	●	●	●	●	●	●	●	●	●	●	●	●	●	●	●	●	●	●	●	●
Auto Louver: 4 Way			●			●			●	●	●	●	●	●	●	●	●	●	●	●	●	●	●	●	●
Auto Mode	●	●	●	●	●	●	●	●	●	●	●	●	●	●	●	●	●	●	●	●	●	●	●	●	●
Economy Mode		●	●		●	●			●	●		●		●		●	●	●	●	●	●	●	●	●	●
Minimum Heat Mode		●	●		●	●			●	●		●		●		●	●	●	●	●	●	●	●	●	●
Energy Saver		●			●											□	□	□	●	●	●	●	●	●	●
Quiet Mode	●	●	●	●	●	●	●	●	●	●	●	●	●	●	●	●	●	●	●	●	●	●	●	●	●
Power Diffuser		●	●		●	●			●	●		●		●		●	●	●	●	●	●	●	●	●	●
Auto Restart/Reset	●	●	●	●	●	●	●	●	●	●	●	●	●	●	●	●	●	●	●	●	●	●	●	●	●
Auto Changeover		●	●		●	●			●	●		●		●		●	●	●	●	●	●	●	●	●	●
Low Ambient	●	●	●	●	●	●	●	●	●	●	●	●	●	●	●	●	●	●	●	●	●	●	●	●	●
0-Degree Ambient																●	●	●	●	●	●	●	●	●	●
Long Piping Length (165'+)										●		●	●	●	●	●	●	●	●	●	●	●	●	●	●
Cold Prevention		●	●		●	●	●		●	●		●		●		●	●	●	●	●	●	●	●	●	●
Slender Fit																			●	●	●	●	●	●	●
Coil Dry Mode		●	●		●	●			●														●	●	●
Wired/Wireless Switching	□	□	□	□	□	□	□	□	□	□	□	□	□	□	□	□	□	□	□	□	□	□	□	□	□
Remote Temperature Sensor																□	□	□	●	●	●	●	●	●	●
Pump Down Operation													●		●	●	●	●	●	●	●	●	●	●	●
High Ceiling Mode																●	●	●	●	●	●	●	●	●	●
Branch Duct Capable																			●	●	●	●	●	●	●
Condensate Pump																			●	●	●	●	●	●	●
Fresh Air Intake																●	●	●	●	●	●	●	●	●	●
2-Stage Turbo Fan																								●	●
Energy Star® Qualified		●	●		●	●	●		●	●		●		●									●*		
Federal Tax Credit Qualified		●	●		●	●	●		●	●		●		●											
V-PAM		●	●		●	●	●		●	●		●		●											
Third Party Device Control*		●	●		●	●	●		●	●		●		●										●	●

□ Available only with optional wired remote controller.

[^] SEER and HSPF ratings depend on combination of indoor units.

+ See page10 for details and limitations.

*The 9+9 wall mounted combination is the only combination that is ENERGY STAR® Qualified from the multi-zone line.





ENERGY STAR® Qualified

ENERGY STAR qualified products and practices help you save money and reduce greenhouse gas emissions by meeting strict energy efficiency guidelines set by the U.S. Environmental Protection Agency and the U.S. Department of Energy.

SEER

Seasonal Energy Efficiency Rating. Used to express efficiency of an AC or Heat Pump. A higher rating means more efficient.

HSPF

Heating Seasonal Performance Factor, measures the efficiency of heating portion of your heat pump.

IAQ Plasma Filter

High performance electronic air cleaner removes dust and odor, improving indoor air quality.



Apple Catechin Filter (polyphenol ingredient from apples)

Dust, mold spores and microorganisms are absorbed onto the filter by static electricity and growth is inhibited and deactivated.



Ion Deodorizing Filter

Deodorizes by decomposing absorbed odors using the oxidizing and reducing effects of ions generated by fine ceramic particles.

Sleep Timer

Automatically adjusts the temperature while you sleep to make you more comfortable.

24 Hour Timer

Allows for one on/off cycle during a 24 hour period.

Weekly Timer

Allows you to set on/off time twice a day and a different on/off time by day.

Dry Mode

Helps reduce humidity levels when cooling requirements are low.

Auto Louver: Up/Down

Redirects airflow automatically with seven position up and down motion which can be set to auto swing.

Auto Louver: 4 Way

Redirects airflow automatically with up/down and left/right motion.

Auto Mode

System starts in high fan speed and automatically adjusts downward as room begins to reach set temperature.

Economy Mode

Thermostat setting automatically changes according to the temperature to avoid unnecessary cooling and heating.

Minimum Heat Mode

Sets room temperature to 50°F, keeping temperatures above freezing and reducing power consumption.

Energy Saver

Keeps room cool enough for comfort by using a relaxed thermostat setting reducing power consumption.

Quiet Mode

An extra quiet fan speed to make sure you are not disturbed.

Power Diffuser

An additional louver that opens based on monitoring sensors to quickly enhance immediate comfort needs.

Auto Restart/Reset

Following a power failure, systems will automatically restart in the same operating mode as before, once the power has been restored.

Auto Changeover (heating to cooling or vice-versa)

Change mode automatically based on set temperature. Operating range is $\pm 4^{\circ}\text{F}$ relative to the set temperature.

Low Ambient

Can operate in cooling mode even when outdoor ambient is 0°F, 14°F or 32°F, depending on model, without modification.

Cold Prevention

Indoor coil will warm prior to fan operating, preventing cold air during heating mode.

Slender Fit

Cassette body can be moved downward into the room 1-3/8" to accommodate limited ceiling space.

Coil Dry Mode

After power is off, an internal drying function starts preventing the growth of mold and bacteria inside the indoor unit.

Wired/Wireless Switching

This must be enabled when installing the optional wired remote controller.

Remote Temperature Sensor

Room temperature sensor is located in optional wired remote controller only.

Pump Down Operation

Collects all refrigerant in system back into the outdoor unit when the unit is to be moved or before servicing the refrigerant circuit.

High Ceiling Mode

Temperature at the top of a high ceiling room may be warmer than the space occupied; this mode adjusts for this difference.

Branch Duct Capable

Systems are capable of attaching field-supplied branch ducts providing up to 38% of the cooling up to 16 feet away.

Fresh Air Intake

Outside air can be introduced by attaching field supplied flexible duct to fresh air knockouts.

2-Stage Turbo Fan

Produces two separate air flow streams which evenly spreads air distribution across heat exchanger.

Federal Tax Credit Qualified

Homeowners can claim 30% of the equipment and labor costs (up to \$1,500) in 2010.

V-PAM

Increases the maximum output of the compressor significantly and enables high power and high efficiency.

Third Party Device Control

Turns system on or off using a normally closed circuit. Interface with third party devices such as home automation.

Built-in Filtration

Fujitsu provides innovative solutions for clean, temperature-controlled indoor air. All Halcyon wall mounted units come with either an electronic Indoor Air Quality (I.A.Q.) Plasma filter or an Ion Deodorizing and Apple Catechin filter combo.

Ion Deodorizing / Apple Catechin Filter

Systems 9RL, 9RLS, 12RL, 12RLS, 18CL, 18RLXS, 24CL, 24RLXS, 30CLX, 30RLX, 36CLX



Long-life* Ion Deodorization Filter

The filter deodorizes by powerfully decomposing absorbed odors using the oxidizing and reducing effects of ions generated by the ultra-fine-particle ceramic.

Apple-Catechin Filter

Fine dust, invisible mold spores, and harmful micro-organisms are absorbed onto the filter by static electricity, and further growth is inhibited and deactivated by the polyphenol ingredient extracted from apples.

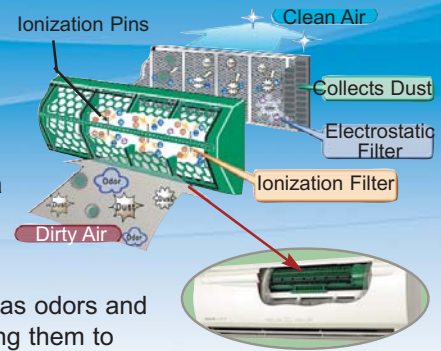


I.A.Q. Plasma Filter

Systems 9CQ, 12CQ, 15RLQ, 18RLQ, and wall mounted multi-zone models 9RMLQ, 12RMLQ, 18RMLQ

Plasma Filter

Creates negative ions which attach to oxygen molecules to create "charged air" combined with a positive charged electrostatic filter, they ionize airborne contaminants, such as odors and allergens, neutralizing them to provide clean temperature-controlled air. Most contaminants which are not destroyed by ionization are trapped by the electrostatic filter.



* The filter can be used for approximately 3 years if it is washed under water to restore its surface action when it is dirty.

Optional Accessories to Control Third Party Devices

Wire Kit # UTY-XWZX

Turns system on or off using a normally closed circuit.



Examples:

- Home automation or BMS integration of **only** On/Off operation of Fujitsu system
- Occupancy Sensor or Key Card Switch
- Lead-lag control of supplemental heating or cooling
- Condensate pump alarm circuit
- Humidistat: turns system on/off based on humidity, regardless of temperature
- Outdoor temperature sensor to shut system off and start a third party heating or cooling source.

Wireless Remote Controller # UTY-LNHFU1

- For spaces where there is just no place to mount the wired remote.



Interface Kit #UTY-XCBXE^ Required to:

- Connect Wired Remote # UTY-RNBYU
- Connect Wire Kit # UTY-XWZX

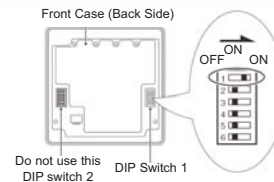
[^]For 9RL and 12RL Systems only.



Wired Remote Controller # UTY-RNBYU

(Same functions as the previous model)

- Min Heat Function not available
- Thermo sensor and Economy function not available on wall mounted models.
- If you use wired remote controller with systems 15RLQ, 18CL, 18RLQ, 24CL, 30CLX or 36CLX you need to change dip switch SW1-1 to "ON".



Do not use this DIP switch 2

	Dry Contact Wire Kit	Interface Kit	New Wired Remote	Optional Wireless Cassette Remote
Accessory Part #	UTY-XWZX	UTY-XCBXE	UTY-RNBYU	UTY-LNHFU1
9RL, 12RL	•	•*	•	
9RLS, 12RLS, 18RLXS, 24RLXS, 30RLX	•		•	
15RLQ, 18CL, 18RLQ			•**	
24CL, 30CLX, 36CLX	•		•**	
AUU9RML, AUU12RML, AUU18RML	•			•

* Required to connect the wired remote.

** Dip switch adjustment required.

Wall Mounted Cooling 9 and 12,000 BTU Systems

SYSTEMS 9CQ, 12CQ

	9CQ		12CQ	
	Cooling Only		Cooling Only	
Nominal Cooling <i>BTU/h</i>	9,700		12,300	
SEER <i>BTU/hW</i>	14.3		13.5	
EER <i>Clg/Htg</i>	11.8		11.6	
Clg. Operating Range °F(°C)	32~115 (0~46)		32~115 (0~46)	
Moisture Removal <i>Pt./h(l/h)</i>	2.1 (1.0)		3.2 (1.5)	
Voltage/Frequency/Phase	115/60/1		115/60/1	
Recommended Fuse Size (A)	15		20	
Air Circ. <i>C.F.M. (m³/h)</i> : Hi	324 (550)		383 (650)	
Medium	271 (460)		324 (550)	
Low	241 (410)		265 (450)	
Quiet	200 (340)		206 (350)	
Noise Level <i>dB(A)</i> : Hi	40		45	
Medium	36		40	
Low	31		35	
Quiet	26		28	
Outdoor Fan Speed <i>RPM</i>	640		770	
Outdoor Noise Level <i>dB(A)</i>	43		45	
Current (A): Cooling	7.6		9.8	
Power Use (kw): Cooling	0.82		1.06	
Fan Speeds <i>Stage</i>	4 + Auto		4 + Auto	
Air Direction: <i>Horizontal</i>	Manual		Manual	
Vertical	Automatic		Automatic	
Air Filter	Washable		Washable	
Plasma Filter	Yes		Yes	
Connection Method	Flare		Flare	
Combined Max. Lgth <i>Ft (m)</i>	49 (15)		49 (15)	
Max. Vertical Diff. <i>Ft (m)</i>	26 (8)		26 (8)	
Conn. Pipe Diameter <i>Inch</i>	Suc. 3/8	Dis. 1/4	Suc. 3/8	Dis. 1/4
Net Weight <i>lbs. (kg)</i>	21 (9.5)	68 (31)	21 (9.5)	77 (35)
Dimensions: Height <i>Inch</i>	11-1/8	21-3/8	11-1/8	21-3/8
<i>mm</i>	283	540	283	540
Width <i>Inch</i>	31-1/8	31-1/8	31-1/8	31-1/8
<i>mm</i>	790	790	790	790
Depth <i>Inch</i>	9-1/8	11-1/2	9-1/8	11-1/2
<i>mm</i>	230	290	230	290
Refrigerant	R410A		R410A	
	Indoor ASU9CQ	Outdoor AOU9CQ	Indoor ASU12CQ	Outdoor AOU12CQ



Function

13 and 14-SEER cooling-only and heat pump systems have over a 30% increase in efficiency over conventional 10-SEER models and feature an Indoor Air Quality IAQ Plasma Filter, environmentally friendly R410A refrigerant, quieter operation and increased energy efficiency.

Standard Features

- Wireless Remote Control
- Plasma Filter
- Sleep Timer
- 24 Hour Timer
- Dry Mode
- Auto Louver: Up/ Down
- Auto Mode
- Quiet Mode
- Auto Restart/Reset
- Low Ambient
- Cold Prevention



Optional Remote

- ❑ Weekly Timer
- ❑ Full Function Wired Remote
- ❑ Child Lock Capable

UTY-RNBYU



Applications

This category of equipment is ideal for smaller spaces where spot cooling is required. Residential applications including sunrooms and additions are made easier with these 115 volt air conditioners and heat pumps. Do you have a warm spot in your home? Our mini-splits can provide extra cooling capacity for those hard to cool areas. Commercially, their small size makes them ideal for small offices, providing individual temperature control.



Wall Mounted High-SEER 9, 12 and 15,000 BTU Systems

SYSTEMS 9RL, 12RL, 15RLQ



UP TO 20 SEER

Function

The high efficiency of these systems helps them pay for themselves by slashing electrical costs. Strong, quiet and efficient DC motors are used both indoors and outdoors. High performance fan blades, condensers and evaporators combined with variable speed inverter-driven compressors makes for unmatched performance.

Energy Efficient

With ratings as high as 20-SEER, systems 9RL, 12RL and 15RLQ are among the highest rated efficiency equipment available anywhere!

Standard Features

- Wireless Remote Control
- Plasma Filter (15RLQ only)
- Sleep Timer
- 24 Hour Timer
- Dry Mode
- Auto Louver: Up/ Down
- Minimum Heat
- Auto Mode
- Quiet Mode
- Auto Restart/Reset
- Auto Changeover
- Low Ambient
- Cold Prevention
- Economy Mode

Optional Feature for 9 and 12RL

Systems 9 and 12RL can be outfitted with the Basic Interface Accessory Kit #UTY-XCBXE, which allows for integrating third party devices such as condensate pump emergency switch or occupancy sensors.**

Optional Wired Remote*

- ▣ Weekly Timer
- ▣ Full Function Wired Remote
- ▣ Child Lock Capable



*Basic Interface Accessory Kit #UTY-XCBXE required in order to connect the wired remote.

**Requires Basic Interface Wire Kit #UTY-XWZX.

	9RL Heat Pump	12RL Heat Pump	15RLQ Heat Pump
Nominal Cooling BTU/h	8,500	11,500	15,000
Min.-Max. Cooling BTU/h	1,700~10,900	3,100~13,300	5,500~17,000
Nominal Heating BTU/h	10,000	14,000	18,000
Low Temp. Heating 17°F BTU/h	6,700	8,800	11,400
Min.-Max. Heating BTU/h	1,700~15,000	3,100~19,100	4,600~25,000
HSPF BTU/hW	10.0	10.0	10.0
SEER BTU/hW	20.0	20.0	20.0
EER Clg/Htg	12.32/12.99	12.36/12.06	12.5/12.6
Clg. Operating Range °F(°C)	14~115 (-10~46)	14~115 (-10~46)	14~115 (-10~46)
Htg. Operating Range °F(°C)	5~75 (-15~24)	5~75 (-15~24)	5~75 (-15~24)
Moisture Removal Pt./h(l/h)	2.8 (1.3)	3.8 (1.8)	4.4 (2.1)
Voltage/Frequency/Phase	208-230/60/1	208-230/60/1	208-230/60/1
Recommended Fuse Size (A)	15	15	20
Air Circ. C.F.M. (m ³ /h): Hi	444 (754)	444 (754)	412 (700)
Medium	361 (613)	361 (613)	341 (580)
Low	260 (442)	260 (442)	270 (460)
Quiet	178 (302)	178 (302)	218 (370)
Noise Level dB(A) (Clg/Htg): Hi	43/43	43/43	45/42
Medium	38/38	38/38	39/38
Low	33/33	33/33	33/33
Quiet	22/22	22/22	25/27
Outdoor Fan Speed RPM Clg/Htg	730/650	860/760	860/820
Outdoor Noise Level (Clg/Htg) dB(A)	46/46	49/49	49/49
Current Rated (A): Cooling	3.3	4.4	5.3
Heating	3.7	5.3	6.3
Power Use Rated (kw): Cooling	.68	.93	1.2
Heating	.77	1.16	1.43
Fan Speeds Stage	4 + Auto	4 + Auto	4 + Auto
Air Direction: Horizontal	Manual	Manual	Manual
Vertical	Automatic	Automatic	Automatic
Air Filter	Washable	Washable	Washable
Plasma Filter	No	No	Yes
Ion Deodorizing Filter	Yes	Yes	No
Apple-Catechin Filter	Yes	Yes	No
Connection Method	Flare	Flare	Flare
Combined Max. Lgth Ft (m)	66 (20)	66 (20)	66 (20)
Max. Vertical Diff. Ft (m)	49 (15)	49 (15)	49 (15)
Conn. Pipe Diameter Inch	Suc. 3/8 Dis. 1/4	Suc. 3/8 Dis. 1/4	Suc. 1/2 Dis. 1/4
Net Weight lbs. (kg)	16.5 (7.5) 55 (25)	16.5 (7.5) 68.3 (31)	22 (10) 88 (40)
Dimensions: Height Inch	10-1/4 21-1/4	10-1/4 21-1/4	11-1/8 22-3/4
mm	260 540	260 540	283 578
Width Inch	31-1/8 26	31-1/8 26	31-1/8 31-1/8
mm	790 660	790 660	790 790
Depth Inch	7-1/16 11-1/2	7-1/16 11-1/2	9-1/16 11-13/16
mm	198 290	198 290	230 300
Refrigerant	R410A	R410A	R410A
Indoor ASU9RL	Outdoor AO9RL	Indoor ASU12RL	Outdoor AO12RL
Indoor ASU15RLQ	Outdoor AO15RLQ		



Please Note: Due to the use of inverter, system is 208-230 single phase.



Note: Figures are based on 230 Volts.

Wall Mounted Super High-SEER 9 and 12,000 BTU Systems

SYSTEMS 9RLS, 12RLS

	9RLS Heat Pump	12RLS Heat Pump
		
Nominal Cooling BTU/h	9,000	12,000
Min.~Max. Cooling BTU/h	3,600~12,000	3,800~14,500
Nominal Heating BTU/h	12,000	16,000
Low Temp. Heating 17°F BTU/h	7,400	10,100
Min.~Max. Heating BTU/h	3,000~22,000	3,100~24,000
HSPF BTU/hW	12	12
SEER BTU/hW	26	25
EER Clg/Htg	17.31/15	14.46/13.33
Clg. Operating Range °F(°C)	14~115 (-10~46)	14~115 (-10~46)
Htg. Operating Range °F(°C)	5~75 (-15~24)	5~75 (-15~24)
Moisture Removal Pt./h(l/h)	2.8 (1.3)	3.8 (1.8)
Voltage/Frequency/Phase	208-230/60/1	208-230/60/1
Recommended Fuse Size (A)	15	15
Air Circ. C.F.M. (m³/h): Hi	430 (730)	430 (730)
Medium	353 (600)	353 (600)
Low	265 (450)	265 (450)
Quiet	177 (300)	177 (300)
Noise Level dB(A) (Clg/Htg): Hi	46/46	46/46
Medium	42/42	42/42
Low	34/34	34/34
Quiet	24/24	24/24
Outdoor Fan Speed RPM Clg/Htg	810/780	870/780
Outdoor Noise Level dB(A) (Clg/Htg)	48/49	49/50
Current Rated (A): Cooling	2.6	3.9
Heating	3.7	5.5
Power Use Rated (kw): Cooling	.52	.83
Heating	.8	1.2
Fan Speeds Stage	4+Auto	4+Auto
Air Direction: Horizontal	Auto	Auto
Vertical	Auto	Auto
Air Filter	Washable	Washable
Apple Catechin Filter	Yes	Yes
Connection Method	Flare	Flare
Combined Max. Lgth Ft (m)	66 (20)	66 (20)
Max. Vertical Diff. Ft (m)	49 (15)	49 (15)
Conn. Pipe Diameter Inch	Suc. 3/8 Dis. 1/4	Suc. 3/8 Dis. 1/4
Net Weight lbs. (kg)	24 (11) 88 (40)	24 (11) 88 (40)
Dimensions: Height Inch	11-5/8 24-13/32	11-5/8 24-13/32
mm	295 620	295 620
Width Inch	31-1/8 31-3/32	31-1/8 31-3/32
mm	790 790	790 790
Depth Inch	8-15/32 9-5/8*	8-15/32 9-5/8*
mm	215/244* 298	215/244* 298
Refrigerant	R410A	R410A
	Indoor ASU9RLS	Outdoor AOU9RLS
	Indoor ASU12RLS	Outdoor AOU12RLS

Note: Figures are based on 230 Volts.



9RLS and 12RLS Qualify for Tax Credit



Up to 26-SEER
Some of the most efficient mini-splits in North America!

Energy Efficient

Since mini splits have little-to-no ducting, they forego those energy losses typically associated with central forced-air systems. Duct losses can easily account for more than 30% of energy consumption, especially if the ducts are not sealed tight or in an unconditioned space such as an attic or crawl-space. **With ratings as high as 26-SEER, systems 9RLS and 12RLS are among the highest rated efficiency mini-splits available anywhere!**

Optional Wired Remote

- ❑ Weekly Timer
- ❑ Full Function Wired Remote
- ❑ Child Lock Capable

UTY-RNBYU



Standard Features

- Wireless Remote Control
- Sleep Timer
- Coil Dry Mode
- Dry Mode
- Auto Louver: 4-Way
- Auto Mode
- Quiet Mode
- Economy Mode
- Auto Restart/Reset
- Auto Changeover
- Low Ambient
- Cold Prevention
- Apple Catechin Filter
- Ion Deodorizing Filter
- Minimum Heat
- Basic Third Party Interface*

*Requires Basic Interface Wire Kit #UTY-XWZX.

Auto Panel

During operation the front panel of the unit opens up to allow for increased air flow.



Federal Tax Credit

Homeowners can claim 30% of the costs (up to a \$1,500 limit) for the installation of systems **9RLS, 12RLS** and **15RLQ** in 2010. The tax credit applies to the installed costs of the qualified equipment, which includes labor.

Visit www.fujitsugeneral.com/rebates.htm for more details.

Wall Mounted 18,000 BTU Systems

SYSTEMS 18CL, 18RLQ, 18RLXS



19-SEER

18RLXS
Qualifies for
Tax Credit of
up to \$1,500

Applications

Systems 18RLQ & 18CL offer clean, aesthetic design with small but mighty indoor units 18-24" shorter in length than competing units, helping them blend into any room. Ideal for spaces requiring additional capacity but are limited on space.

System 18RLXS is a highly efficient system with long piping length, allowing for increased installation options.

Standard Features

- Wireless Remote Control
- Sleep Timer
- 24 Hour Timer
- Dry Mode
- Auto Louver: Up/Down
- Minimum Heat (18RLXS)
- Quiet Mode
- Auto Restart/Reset
- Auto Changeover
- Low Ambient to 14°F Clg
- Apple Catechin Filter*
- Ion Deodorizing Filter*
- Plasma Filter (18RLQ)
- Auto Louver: Left/Right**
- Coil Dry Mode (18CL, 18RLQ)
- Economy Mode**

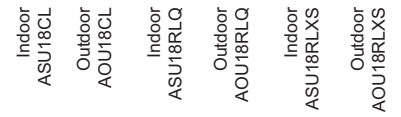
Features of System 18RLXS and 24RLXS

(See Page 15)

NEW for 2010

- **ENERGY STAR® Qualified:** Cuts down on utility bills and may qualify for local utility company rebates of up to \$1,200.
- **Federal Tax Credit Qualified:** Homeowners can claim 30% of the costs (up to a \$1,500 limit) in 2010. The tax credit applies to equipment and labor costs.
- **Long Piping Length of up to 165 Feet:** Place the indoor unit up to 165' from the outdoor unit for increased installation flexibility options.

	18CL Cooling Only	18RLQ Heat Pump	18RLXS Heat Pump New for 2010
Nominal Cooling BTU/h	18,000	18,000	18,000
Min.~Max. Cooling BTU/h	5,500~19,000	5,500~19,000	7,000~23,000
Nominal Heating BTU/h	-	21,600	21,600
Low Temp. Heating 17°F BTU/h	-	-	-
Min.~Max. Heating BTU/h	-	4,600~29,000	7,000~29,000
HSPF BTU/hW	-	10.0	10.0
SEER BTU/hW	19.0	19.0	19.2
EER Clg/Htg	10.4	10.4/11.2	13.0/12.0
Clg. Operating Range °F(°C)	14~115 (-10~46)	14~115 (-10~46)	14~115 (-10~46)
Htg. Operating Range °F(°C)	-	5~75 (-15~24)	5~75 (-15~24)
Moisture Removal Pt./h(l/h)	5.9 (2.8)	5.9 (2.8)	5.9 (2.8)
Voltage/Frequency/Phase	208-230/60/1	208-230/60/1	208-230/60/1
Recommended Fuse Size (A)	20	20	20
Air Circ. C.F.M. (m³/h): Hi	412 (700)	412 (700)	541 (920)
Medium	342 (581)	341 (580)	435 (740)
Low	271 (460)	270 (460)	365 (620)
Quiet	218 (370)	218 (370)	306 (520)
Noise Level dB(A) (Clg/Htg): Hi	44	45/42 (Clg/Htg)	43/44 (Clg/Htg)
Medium	38	39/38 (Clg/Htg)	37/37 (Clg/Htg)
Low	32	33/33 (Clg/Htg)	33/33 (Clg/Htg)
Quiet	25	25/27 (Clg/Htg)	28/28 (Clg/Htg)
Outdoor Fan Speed RPM Clg/Htg	860	860/820	620/620
Outdoor Noise Level (Clg/Htg) dB(A)	50	50/50 (Clg/Htg)	48/50 (Clg/Htg)
Current Rated (A): Cooling	7.7/9.0	7.7/9.0	6.3/13.5
Heating	-	8.6/13.5	8.0/14.5
Power Use Rated (kw): Cooling	1.73/2.0	1.73/2.0	1.38/3.01
Heating	-	1.93/2.93	1.80/3.23
Fan Speeds Stage	4 + Auto	4 + Auto	4 + Auto
Air Direction: Horizontal	Manual	Manual	Manual
Vertical	Automatic	Automatic	Automatic
Air Filter	Washable	Washable	Washable
Plasma Filter	No	Yes	No
Connection Method	Flare	Flare	Flare
Combined Max. Lgth Ft (m)	66 (20)	66 (20)	164 (50)
Max. Vertical Diff. Ft (m)	49 (15)	49 (15)	98 (30)
Conn. Pipe Diameter Inch	Suc. 1/2 20 (9)	Dis. 1/4 22 (10)	Suc. 1/2 22 (10)
Net Weight lbs. (kg)	88 (40)	88 (40)	31 (14)
Dimensions: Height Inch	10-13/16	22-3/4	11-1/8
mm	275	578	283
Width Inch	31-1/8	31-1/8	31-1/8
mm	790	790	790
Depth Inch	8-7/16	11-13/16	9-1/16
mm	215	300	230
Refrigerant	R410A	R410A	R410A



Note: Figures are based on 230 Volts.


*Feature available only on Systems 18CL and 18RLXS.
**Feature available only on System 18RLXS.



Wall Mounted 24, 30 and 36,000 BTU Systems

SYSTEMS 24CL, 24RLXS, 30CLX, 30RLX, 36CLX

24RLXS
Qualifies for
Tax Credit of
up to \$1,500

	24CL Cooling Only		24RLXS Heat Pump New for 2010 		30CLX Cooling Only		30RLX Heat Pump New for 2010		36CLX Cooling Only	
Nominal Cooling BTU/h	24,200		22,000		30,700		30,000		33,100	
Min.~Max. Cooling BTU/h	5,200~26,000		9,900~27,300		9,900~32,400		9,900~32,400		9,900~34,100	
Nominal Heating BTU/h	-		27,600		-		32,000		-	
Low Temp. Heating 17°F BTU/h	-		17,800		-		20,200		-	
Min.~Max. Heating BTU/h	-		7,500~36,200		-		8,000~37,500		-	
HSPF BTU/hW	-		10.0		-		9.5		-	
SEER BTU/hW	18.0		18.0		15.0		17.5		15.0	
EER Clg/Htg	10.5		12.5		8.9		10.0		8.2	
Clg. Operating Range °F(°C)	14~115 (-10~46)		0~115 (-18~46)		14~115 (-10~46)		0~115 (-18~46)		14~115 (-10~46)	
Htg. Operating Range °F(°C)	-		0~75 (-18~24)		-		0~75 (-18~24)		-	
Moisture Removal Pt./h(l/h)	5.3 (2.5)		6.3 (3.0)		9.7 (4.6)		9.5 (4.5)		10.1 (4.8)	
Voltage/Frequency/Phase	208-230/60/1		208-230/60/1		208-230/60/1		208-230/60/1		208-230/60/1	
Recommended Fuse Size (A)	25		30		30		30		30	
Air Circ. C.F.M. (m³/h): Hi	647 (1,100)		659 (1,120)		647 (1,100)		659 (1,120)		706 (1,200)	
Medium	530 (900)		500 (930)		530 (900)		500 (930)		530 (900)	
Low	436 (740)		435 (740)		436 (740)		435 (740)		436 (740)	
Quiet	365 (620)		365 (620)		365 (620)		365 (620)		365 (620)	
Noise Level dB(A): Hi	47		49		47		49		49	
Medium	41		42		41		42		41	
Low	36		37		36		37		36	
Quiet	32		33		32		33		32	
Outdoor Fan Speed RPM Clg/Htg	1,000		800/850		850		850/850		850	
Outdoor Noise Level dB(A)	52		54/55 (Clg/Htg)		53		54/55 (Clg/Htg)		54	
Current Rated/Max (A): Cooling	10.1/12.0		7.9/15		15.2/18.0		13.2/17.0		17.7/19.0	
Heating	-		10.5/15.5		-		13.1/18.5		-	
Power Use Rated/Max (kw): Cooling	2.3/2.6		1.76/3.42		3.5/4.1		3.00/3.87		4.0/4.3	
Heating	-		2.38/3.53		-		2.99/4.22		-	
Fan Speeds Stage	4 + Auto		4 + Auto		4 + Auto		4 + Auto		4 + Auto	
Air Direction: Horizontal	Automatic		Automatic		Automatic		Automatic		Automatic	
Vertical	Automatic		Automatic		Automatic		Automatic		Automatic	
Air Filter	Washable		Washable		Washable		Washable		Washable	
Connection Method	Flare		Flare		Flare		Flare		Flare	
Combined Max. Lgth Ft (m)	98 (30)		164 (50)		164 (50)		164 (50)		164 (50)	
Max. Vertical Diff. Ft (m)	66 (20)		98 (30)		98 (30)		98 (30)		98 (30)	
Conn. Pipe Diameter Inch	Suc. 5/8 Dis. 1/4		Suc. 5/8 Dis. 3/8		Suc. 5/8 Dis. 3/8		Suc. 5/8 Dis. 3/8		Suc. 5/8 Dis. 3/8	
Net Weight lbs. (kg)	31 (14) 97 (44)		31 (14) 137(62)		31 (14) 137(62)		31 (14) 137(62)		31 (14) 137(62)	
Dimensions: Height Inch	12-5/8 22-3/4		12-5/8 32-3/4		12-5/8 32-3/4		12-5/8 32-3/4		12-5/8 32-3/4	
mm	320 578		320 830		320 830		320 830		320 830	
Width Inch	39-1/4 31-1/8		39-1/4 35-3/8		39-1/4 35-3/8		39-1/4 35-3/8		39-1/4 35-3/8	
mm	998 790		998 900		998 900		998 900		998 900	
Depth Inch	9 12-3/8		9 13		9 13		9 13		9 13	
mm	228 315		228 300		228 330		228 300		228 330	
Refrigerant	R410A		R410A		R410A		R410A		R410A	
	Indoor ASU24CL	Outdoor AOU24CL	Indoor ASU24RLXS	Outdoor AOU24RLXS	Indoor ASU30CLX	Outdoor AOU30CLX	Indoor ASU30RLX	Outdoor AOU30RLX	Indoor ASU36CLX	Outdoor AOU36CLX

Note: Figures are based on 230 Volts.



Up to 18-SEER

Function

Ultra compact yet efficient, these systems provide maximum cooling in 30% less space while saving you money. Additionally, systems 24RLXS and 30RLX provide low ambient operation rated down to 0° right out of the box without modification.

Standard Features

- Wireless Remote Control
- Sleep Timer
- 24 Hour Timer
- Dry Mode
- Auto Louver: 4 Way
- Auto Mode
- Quiet Mode
- Power Diffuser
- Auto Restart/Reset
- Low Ambient
- Cold Prevention
- Apple Catechin Filter
- Ion Deodorizing Filter
- Pump Down Operation**
- Basic Third Party Interface

Optional Remote

- ▣ Weekly Timer
- ▣ Full Function Wired Remote
- ▣ Child Lock Capable

Applications

The flexibility of the variable speed compressor helps system adapt to shifts in heat load by occupants or fluctuating heat generated by computers. This heat pump provides 13% additional available heat when compared to conventional models.



**Contractor feature only. Only available on Systems 30CLX and 36CLX.

Mix & Match Multi-Zone Systems

Indoor Units (Wall Mounted): ASU9RMLQ, ASU12RMLQ, ASU18RMLQ
 Indoor Units (Concealed Ceiling): ARU9RML, ARU12RML, ARU18RML
 Indoor Units (Cassette): AUU9RML, AUU12RML, AUU18RML
 Outdoor Units: AOU24RML1, AOU36RML1



Applications

Contractors can select either a 24 or 36,000 BTU outdoor unit combined with 9,000, 12,000 or 18,000 BTU wall mounted, compact cassette or concealed ceiling type indoor units. Create 116 different systems with only 11 components. Mix-and-match flexibility of evaporator type and capacity allows you to choose the indoor unit that best fits the application, whether it be hidden or showcased. These systems are ideal for nursing homes, doctor's offices, condominiums, apartments and residences - any place where individual cooling or heating is needed.

Up to 16.5 SEER*

Multi-Zone SEER, HSPF

	Wall	Cassette	Concealed Ceiling	Mixed
Dual Zone SEER	16.5	16.5	15.0	15.75
Dual Zone HSPF	9.0	9.4	8.6	8.8
Tri/Quad Zone SEER	15.0	16	14.0	14.5
Tri/Quad Zone HSPF	9.0	9.4	8.6	8.8

Standard Features

- Plasma Filter**
- Sleep Timer
- 24 Hour Timer
- Auto Louver: Up/ Down**
- Coil Dry Mode**
- Auto Restart
- Quiet Mode^
- Dry Mode
- Cold Prevention

*SEER rating depends on combination of indoor units.

**Available on wall mounted evaporator only.

^ Not available on concealed ceiling model.

Optional Remote (for wall mounted units)

Concealed ceiling and cassette type units include a wired remote control standard.

- Full Function Wired Remote
- Remote Control Thermo Sensor
- Child Lock Capable

UTY-RNBYU
(Compact Cassette or Concealed Ceiling)



Fujitsu offers transitions (for concealed ceiling models)

RT-ARU9 Return

Inlet transition:
7" x 21" rectangular
x 10" round



ST-ARU9 Supply

Discharge transition:
6" x 15-3/4" rectangular
x 10" round

RT-ARU12/18 Return

Inlet transition:
7" x 32" rectangular
x 12" round

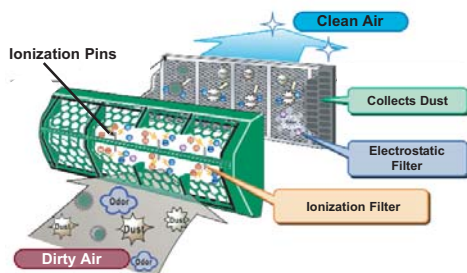


ST-ARU12/18 Supply

Discharge transition:
6" x 23-3/4" rectangular
x 12" round

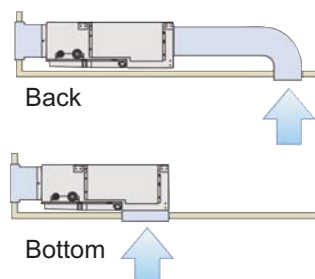
I.A.Q. Plasma Filter (Wall Mounted Model)

High performance electronic air cleaner removes dust and odor, improving indoor air quality.



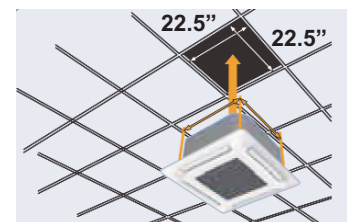
Return Air-intake (Concealed Ceiling Model)

Air intake direction can be selected to match the installation site.



Easy Installation (Cassette Model)

Fits into a standard ceiling tile*. Compact cassette and concealed ceiling models can be networked.



*Dimensions of outer grille are 27-9/16" x 27-9/16" and may overlap adjacent tiles.



Allowable Combinations



ASU9RMLQ
ASU12RMLQ
ASU18RMLQ



ARU9RML
ARU12RML
ARU18RML



AUU9RML*
AUU12RML*
AUU18RML*



AOU24RML1
AOU36RML1

Wall Mount	9	12	18	Cassette	9	12	18	Duct Type	9	12	18
18,000 BTU Dual Zone Combinations											
9	9			9	9			9	9		
9	9			9	9			9	9		
21,000 BTU Dual Zone Combinations											
9	12			9	12			9	12		
9	12			9	12			9	12		
9	12			9	12			9	12		
24,000 BTU Dual Zone Combinations											
12	12			12	12			12	12		
12	12			12	12			12	12		
36,000 BTU Dual Zone Combinations											
18	18			18	18			18	18		
18	18			18	18			18	18		
27,000 BTU Tri Zone Combinations											
9	9	9		9	9	9		9	9	9	
9	9	9		9	9	9		9	9	9	
9	9	9		9	9	9		9	9	9	
9	9	9		9	9	9		9	9	9	
30,000 BTU Tri Zone Combinations											
9	9	12		9	9	12		9	9	12	
9	9	12		9	9	12		9	9	12	
9	9	12		9	9	12		9	9	12	
9	9	12		9	9	12		9	9	12	
9	9	12		9	9	12		9	9	12	
9	9	12		9	9	12		9	9	12	
33,000 BTU Tri Zone Combinations											
9	12	12		9	12	12		9	12	12	
9	12	12		9	12	12		9	12	12	
9	12	12		9	12	12		9	12	12	
9	12	12		9	12	12		9	12	12	
9	12	12		9	12	12		9	12	12	
9	12	12		9	12	12		9	12	12	
36,000 BTU Tri Zone Combinations											
9	9	18		9	9	18		9	9	18	
9	9	18		9	9	18		9	9	18	
9	9	18		9	9	18		9	9	18	
9	9	18		9	9	18		9	9	18	
9	9	18		9	9	18		9	9	18	
9	9	18		9	9	18		9	9	18	
12	12	12		12	12	12		12	12	12	
12	12	12		12	12	12		12	12	12	
12	12	12		12	12	12		12	12	12	
12	12	12		12	12	12		12	12	12	
36,000 BTU Quad Zone Combinations											
9	9	9	9	9	9	9	9	9	9	9	9
9	9	9	9	9	9	9	9	9	9	9	9
9	9	9	9	9	9	9	9	9	9	9	9
9	9	9	9	9	9	9	9	9	9	9	9
9	9	9	9	9	9	9	9	9	9	9	9

* Note: Compact Cassette Grille (Model # UTG-CCG) sold separately. 3-Way airflow requires accessory #UTR-YDZB.

OUTDOOR UNITS

	HxWxD in (mm)	Operating Range		Weight lb (kg)	Connection Type	Noise Level dB(A): Clg/Htg	Outdoor Fan Airflow Rate CFM (Clg/Htg)	Rec. Fuse Size	Voltage(V)/ Frequency(Hz)/ Phase	Refrigerant
		Cooling	Heating							
AOU24RML1	32-7/8 x 35-7/16 x 13	32 ~ 115 (°F)	14 ~ 75 (°F)	136 (62)	FLARE	50/51	1,883/1,883	20	208~230/60/1	410A
AOU36RML1	(835x900x330)	0 ~46 (°C)	-10 ~24 (°C)	149 (68)	FLARE	51/53	2,119/2237	30	208~230/60/1	410A

Multi-Zone Indoor Units

Model	ASU9RMLQ	AUU9RML	ARU9RML	ASU12RMLQ	AUU12RML	ARU12RML	ASU18RMLQ	AUU18RML	ARU18RML
Type	WALL	CASSETTE	CONCEALED CEILING	WALL	CASSETTE	CONCEALED CEILING	WALL	CASSETTE	CONCEALED CEILING
Standard Remote	WIRELESS	WIRED (UTY-RNBYU)	WIRED (UTY-RNBYU)	WIRELESS	WIRED (UTY-RNBYU)	WIRED (UTY-RNBYU)	WIRELESS	WIRED (UTY-RNBYU)	WIRED (UTY-RNBYU)
Optional Remote	UTY-RNBYU [^]	-	UTY-RNBYU [^]	UTY-RNBYU [^]	-	UTY-RNBYU [^]	UTY-RNBYU [^]	-	UTY-RNBYU [^]
Min/Nom/Max Clg BTU/h	5.1k/9.5k/11.3k	5.1k/9.5k/11.3k	5.1k/9.5k/11.3k	5.1k/12k/13.6k	5.1k/12k/13.6k	5.1k/12k/13.6k	6.1k/17.8k/19k	6.1k/17.8k/19k	6.1k/17.8k/19k
Min/Nom/Max Htg BTU/h	5.1k/11k/13k	5.1k/11k/13k	5.1k/11k/13k	5.1k/14k/15.4k	5.1k/14k/15.4k	5.1k/14k/15.4k	6.1k/20.5k/23k	6.1k/20.5k/23k	6.1k/20.5k/23k
C.F.M.: Hi/Med/Lo/Quiet Static Pressure (in.WG)	312/271/224/194	318/288/259/230	294/241/218/-(.0/.0/.0)	365/318/265/224	359/312/277/241	412/377/324/-(.0/.0/.0)	377/347/294/253	441/359/306/241	494/412/377/-(.0/.0/.0)
C.F.M.: Hi/Med/Lo Static Pressure (in.WG)	-	-	250/210/195 (.16/.10/.08)	-	-	305/280/250 (.16/.13/.10)	-	-	380/325/290 (.16/.14/.12)
Noise level dB(A): Hi/Med/Lo/Quiet	37/33/27/24	34/32/29/27	39/35/32/-	42/38/32/27	37/33/31/28	36/34/31/-	44/42/38/33	44/40/37/30	40/36/34/-
Fan Speeds Stage	4 + Auto	4 + Auto	3 + Auto	4 + Auto	4 + Auto	3 + Auto	4 + Auto	4 + Auto	3 + Auto
Air Direction	Horiz.	Manual	-	Manual	-	-	Manual	-	-
	Vertical	Automatic	Automatic	-	Automatic	Automatic	-	Automatic	Automatic
Air Filter	Washable	Washable	Washable	Washable	Washable	Washable	Washable	Washable	Washable
Plasma Filter	Yes	No	No	Yes	No	No	Yes	No	No
Weight lb (kg)	20 (9.5)	33 (1.5)	40 (18)	20 (9.5)	33 (1.5)	55 (25)	20 (9.5)	33 (1.5)	55 (25)
HxWxD in (mm)	11-5/32 x 31-3/32 x 9-1/16	9-21/32 x 22-14/32 x 22-14/32	8-17/32 x 26-3/32 x 23-7/16	11-5/32 x 31-3/32 x 9-1/16	9-21/32 x 22-14/32 x 22-14/32	8-17/32 x 37-17/32 x 23-7/16	11-5/32 x 31-3/32 x 9-1/16	9-21/32 x 22-14/32 x 22-14/32	8-17/32 x 37-17/32 x 23-7/16
	(283x790x230)	(245x570x570)	(217x663x595)	(283x790x230)	(245x570x570)	(217x953x595)	(283x790x230)	(245x570x570)	(217x953x595)
Connection	FLARE	FLARE	FLARE	FLARE	FLARE	FLARE	FLARE	FLARE	FLARE
Suction ⁺	3/8	3/8	3/8	3/8	3/8	3/8	1/2	1/2	1/2
Discharge	1/4	1/4	1/4	1/4	1/4	1/4	1/4	1/4	1/4

Dual-Zone Combinations

	Type of Indoor Unit	Total Min/Nom/Max Clg BTU/h	Total Min/Nom/Max Htg BTU/h	Low Htg 17°F BTU/h	SEER	HSPF	EER Clg/Htg	Moisture Removal Pt./h (l/h)	Rec. Fuse Size (A)	Total Max. Lgth Ft.	Max Lgth Ea. Ft.	Max. Vertical Diff. Ft.	Current Rated/Max (A): Clg	Current Rated/Max (A): Htg	Power Use Rated/Max (kw): Clg	Power Use Rated/Max (kw): Htg
	9+9 Wall	11k/19k/22.6k	11k/22k/26k	*13200	16.5	9	12.2/12.5	3.4 (1.6)	20	98	82	33	6.8/8.3	7.7/9.2	1.56/1.9	1.76/2.1
	9+9 Cassette	11k/18.2k/22.6k	11k/22k/26k	*13200	16.5	9.4	12.2/12.5	3.8 (1.8)	20	98	82	33	7.0/9.0	8.5/10.7	1.6/2.05	1.95/2.45
	9+9 Concealed Ceiling	11k/17.6k/22.6k	11k/22k/26k	*13200	15	8.6	10.6/10.3	3.8 (1.8)	20	98	82	33	7.2/9.0	9.3/10.7	1.65/2.05	2.13/2.45
	9+9 **Mixed	11k/19k/22.6k	11k/22k/26k	*13200	15.75	8.8	11.4/11.5	3.4 (1.6)	20	98	82	33	7.2/9.0	9.3/10.7	1.65/2.05	2.13/2.45
9+12	9+12 Wall	11k/21.4k/26k	11k/25k/32k	*15000	16.5	9	11.1/12.3	4.0 (1.9)	20	98	82	33	8.4/11.4	8.9/12	1.92/2.6	2.04/2.75
	9+12 Cassette	11k/20.8k/26k	11k/24.7k/32k	*15000	16.5	9.4	10.6/10.9	4.4 (2.1)	20	98	82	33	8.6/11.8	9.8/14	1.96/2.7	2.25/3.2
	9+12 Concealed Ceiling	11k/20.2k/26k	11k/24.4k/32k	*15000	15	8.6	10.2/9.9	4.4 (2.1)	20	98	82	33	8.7/11.8	10.8/14	1.99/2.7	2.46/3.2
	9+12 **Mixed	11k/20.2k/26k	11k/24.4k/32k	*15000	15.75	8.8	11.1/12.3	4.0 (1.9)	20	98	82	33	8.7/11.8	10.8/14	1.99/2.7	2.46/3.2
12+12	12+12 Wall	11k/24k/27.6k	11k/28k/33k	16600	16.5	9	10.4/11.9	4.6 (2.2)	20	98	82	33	10.1/12	10.3/12	2.3/2.75	2.35/2.75
	12+12 Cassette	11k/23.4k/27.6k	11k/27.6k/33k	16600	16.5	9.4	9.95/8.9	5 (2.4)	20	98	82	33	10.3/13.5	11.1/14	2.35/3.1	2.53/3.2
	12+12 Concealed Ceiling	11k/22.8k/27.6k	11k/27.2k/33k	16600	15	8.6	9.5/9.9	5 (2.4)	20	98	82	33	10.5/13.5	12/14	2.4/3.1	2.74/3.2
	12+12 **Mixed	11k/22.8k/27.6k	11k/27.6k/33k	16600	15.75	8.8	9.5/9.9	4.6 (2.2)	20	98	82	33	10.5/13.5	12/14	2.4/3.1	2.74/3.2

Proper sizing and installation of equipment is critical to achieve optimal performance. Split system air conditioners and heat pumps must be matched with appropriate coil components to meet ENERGY STAR criteria. Ask your contractor for details or visit www.energystar.gov. The 9+9 wall mounted dual zone is the only combination that is ENERGY STAR® qualified from the multi-zone line.

^{*}Low Heating Output capacity is calculated data, as not all combinations have been tested.
^{**}Mixed calculation is based upon the statistical average of ducted and wall mounted indoor units.

[^]Thermo-Sensor button and Energy Save button non-functional with this indoor model.

⁺For quad zone connection there is an adapter provided in order to connect the 3/8" lineset to the 1/2" valve on port A.

New for 2010!

Dual-Zone Combinations (cont)

	Type of Indoor Unit	Total Min/Nom/Max Clg BTU/h	Total Min/Nom/Max Htg BTU/h	Low Htg 17°F BTU/h	SEER	HSPF	EER Clg/Htg	Moisture Removal Pt./h (l/h)	Rec. Fuse Size (A)	Total Max. Lgth Ft.	Max Lgth Ea. Ft.	Max. Vertical Diff. Ft.	Current Rated/Max (A): Clg	Current Rated/Max (A): Htg	Power Use Rated/Max (kw): Clg	Power Use Rated/Max (kw): Htg
18+18 [^]	Wall	11k/30.4k/32k	11k/35.8k/40k	*28510	15	9	7.95	6.3 (3)	30	164	82	49	16.7/18.0	16.0/16.6	3.82/4.10	3.66/3.80
	Cassette	11k/31.6k/32k	11k/37k/40k	*28510	15	9	7.95	6.3 (3)	30	164	82	49	17.4/19.1	15.7/18.8	3.98/4.38	3.59/4.30
	Concealed Ceiling	11k/31.6k/32k	11k/35k/40k	*28510	14	8.6	7.9	6.3 (3)	30	164	82	49	17.4/19.1	15.9/18.8	4.00/4.38	3.64/4.30
	**Mixed	11k/31k/32k	11k/35.4k/40k	*28510	14.5	8.5	7.9	6.3 (3)	30	164	82	49	17.4/19.1	16.0/18.8	3.91/4.38	3.65/4.30

[^] Fittings kit, Part #K9M1818, is required for 18+18 dual zone combinations.

Tri and Quad-Zone Combinations

	Type of Indoor Unit	Total Min/Nom/Max Clg BTU/h	Total Min/Nom/Max Htg BTU/h	Low Htg 17°F BTU/h	SEER	HSPF	EER Clg/Htg	Moisture Removal Pt./h (l/h)	Rec. Fuse Size (A)	Total Max. Lgth Ft.	Max Lgth Ea. Ft.	Max. Vertical Diff. Ft.	Current Rated/Max (A): Clg	Current Rated/Max (A): Htg	Power Use Rated/Max (kw): Clg	Power Use Rated/Max (kw): Htg
9+9+9	Wall	11k/27.6k/33k	11k/33k/40.2k	*19800	15	9	10/11.1	5.1 (2.4)	30	230	82	49	12/16.4	13/16.6	2.75/3.74	2.96/3.8
	Cassette	11k/27k/33k	11k/33k/40.2k	*19800	16	9.4	9.5/10.2	5.7 (2.7)	30	230	82	49	12.2/16.4	14.1/18.8	2.8/3.74	3.23/4.3
	Concealed Ceiling	11k/26.6k/33k	11k/33k/40.2k	*19800	14	8.6	9.3/9.4	5.7 (2.7)	30	230	82	49	12.4/16.4	15.3/18.8	2.85/3.74	3.5/4.3
	**Mixed	11k/26.6k/33k	11k/33k/40.2k	*19800	14.5	8.8	9.3/9.4	5.1 (2.4)	30	230	82	49	12.4/16.4	15.3/18.8	2.85/3.74	3.5/4.3
9+9+12	Wall	11k/30.4k/33.8k	11k/35.4k/40.6k	*21240	15	9	9.2/11.4	5.7 (2.7)	30	230	82	49	14.4/18	13.5/18	3.3/4.1	3.1/4.1
	Cassette	11k/29.8k/33.8k	11k/35.4k/40.6k	*21240	16	9.4	8.85/8.0	6.3 (3)	30	230	82	49	14.6/19.1	15.3/18.8	3.35/4.38	3.5/4.3
	Concealed Ceiling	11k/29.2k/33.8k	11k/35.4k/40.6k	*21240	14	8.6	8.6/9.1	6.3 (3)	30	230	82	49	14.8/19.1	17/18.8	3.4/4.38	3.9/4.3
	**Mixed	11k/29.2k/33.8k	11k/35.4k/40.6k	*21240	14.5	8.8	8.6/9.1	5.7 (2.7)	30	230	82	49	14.8/19.1	17/18.8	3.4/4.38	3.9/4.3
9+12+12	Wall	11k/33k/34.6k	11k/37k/41k	*21900	15	9	8.8/11.2	6.3 (3)	30	230	82	49	16.4/18	14.5/18	3.75/4.1	3.3/4.1
	Cassette	11k/32.2k/34.6k	11k/36.6k/41k	*21900	16	9.4	8.4/9.7	6.9 (3.3)	30	230	82	49	16.7/19.7	16.4/18.8	3.83/4.38	3.75/4.3
	Concealed Ceiling	11k/31.4k/34.6k	11k/36.2k/41k	*21900	14	8.6	8.1/8.6	6.9 (3.3)	30	230	82	49	17/19.1	18.3/18.8	3.9/4.38	4.2/4.3
	**Mixed	11k/31.4k/34.6k	11k/36.2k/41k	*21900	14.5	8.8	8.1/8.6	6.3 (3)	30	230	82	49	17/19.1	18.3/18.8	3.9/4.38	4.2/4.3
12+12+12	Wall	11k/35k/35.6k	11k/37.2k/42k	*22080	15	9	8.8/11.3	6.9 (3.3)	30	230	82	49	17.5/18	14.5/16.6	4/4.1	3.3/3.8
	Cassette	11k/33.8k/35.6k	11k/36.4k/42k	*22080	16	9.4	8.25/10	7.5 (3.6)	30	230	82	49	17.8/19.1	16/18.8	4.08/4.38	3.65/4.3
	Concealed Ceiling	11k/32.8k/35.6k	11k/36.2k/42k	*22080	14	8.6	7.9/9.1	7.5 (3.6)	30	230	82	49	18.1/19.1	17.5/18.8	4.15/4.38	4/4.3
	**Mixed	11k/32.8k/35.6k	11k/36.2k/42k	*22080	14.5	8.8	7.9/9.1	6.9 (3.3)	30	230	82	49	18.1/19.1	17.5/18.8	4.15/4.38	4/4.3
9+9+18	Wall	11k/35.2k/36k	11k/37.2k/42k	*22200	15	9	8.8/11.3	8.3 (3.9)	30	230	82	49	17.5/18	14.5/16.6	4/4.1	3.3/3.8
	Cassette	11k/34.2k/36k	11k/37k/42k	*22200	16	9.4	8.35/10.6	7.2 (3.4)	30	230	82	49	17.8/19.1	15.2/18.8	4.08/4.38	3.48/4.3
	Concealed Ceiling	11k/33.2k/36k	11k/36.8k/42k	*22200	14	8.6	8.0/10.1	7.2 (3.4)	30	230	82	49	18.1/19.1	16/18.8	4.15/4.38	3.65/4.3
	**Mixed	11k/33.2k/36k	11k/36.8k/42k	*22200	14.5	8.8	8.0/10.1	7.2 (3.4)	30	230	82	49	18.1/19.1	16/18.8	4.15/4.38	3.65/4.3
9+9+9+9	Wall	11k/35.2k/36k	11k/36.4k/42k	22000	15	9	8.8/12.1	6.8 (3.2)	30	230	82	49	17.5/18	13.1/16.2	4/4.1	3.0/3/7
	Cassette	11k/34.4k/36k	11k/36.4k/42k	22000	16	9.4	8.45/11.3	7.6 (3.6)	30	230	82	49	17.8/19.1	14.0/16.8	4.07/4.38	3.21/3.85
	Concealed Ceiling	11k/33.8k/36k	11k/36.4k/42k	22000	14	8.6	8.1/10.6	7.6 (3.6)	30	230	82	49	18.1/19.1	15.1/16.8	4.15/4.38	3.45/3.85
	**Mixed	11k/33.8k/36k	11k/36.4k/42k	22000	14.5	8.8	8.1/10.6	6.8 (3.2)	30	230	82	49	18.1/19.1	15.1/16.8	4.15/4.38	3.45/3.85

*Low Heating Output capacity is calculated data, as not all combinations have been tested.

Ceiling Cassette Systems

SYSTEMS 18RCLX, 24RCLX, 36RCLX, 42RCLX



Function

Up to 16-SEER, these models provide up to 30% increase in efficiency over 13-SEER models. These models offer the ability to send up to 38% of their capacity through two branch ducts to adjacent rooms. Slender fit feature now offered on all models decreases space required above the ceiling increasing application opportunities.

Standard Features

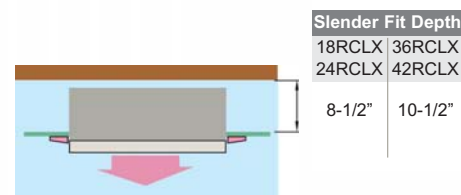
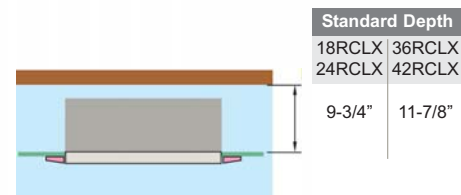
- Dry Mode
- Auto Louver: Up/ Down
- Auto Mode
- Energy Saver
- Auto Restart/Reset
- Auto Changeover
- Fresh Air Intake*
- Low Ambient
- Cold Prevention
- Slender Fit
- Pump Down Operation
- High Ceiling Mode
- Branch Duct Capable
- Built-in Condensate Pump

Applications

Four-way airflow, concealed flush mount design and the ability to operate in high ceiling rooms makes these systems ideal for commercial applications such as offices, conference rooms, restaurants, night clubs and bars in retrofit and new construction. Long maximum combined piping lengths of 165 to 230 feet with 60 to 98 feet of height, depending on model, allow the outdoor unit to be remotely located up to 7 stories away and far from indoor unit. The ceiling cassettes are also used in new construction condominiums and homes taking advantage of their branch duct capability to feed adjacent rooms. These heat pumps provide up to 30% additional available heat when compared to conventional models.

Standard Wired Remote

- Weekly timer
- Set on-off time twice a day
- Set different on-off time by day
- Set time in 5 minute intervals
- Control up to 16 indoor units
- Child lock capable
- Remote temperature sensor



Slender Fit

Cassette body can be moved downward into the room 1-3/8" to accommodate limited ceiling space.

*Fresh air knockout available. Fresh air fan and ductwork field supplied. See design and technical manual for details. Fujitsu fresh air intake kit available part #KHRS940-25.



Fujitsu provides knock-outs on all ceiling cassettes where contractors can:

- Install optional field supplied branch ducts on up to two sides to supply up to 18% capacity per side to adjoining spaces up to 16 feet away. See Design and Technical Manual for details.

	18RCLX		24RCLX		36RCLX		42RCLX	
	Heat Pump		Heat Pump		Heat Pump		Heat Pump	
Nominal Cooling BTU/h	17,800		22,200		34,100		42,700	
Min.~Max. Cooling BTU/h	5,000~21,500		5,000~27,300		8,500~36,000		13,700~45,000	
Nominal Heating BTU/h	21,000		24,200		36,000		45,200	
Low Temp. Heating 17°F BTU/h	11,300		14,600		23,000		28,200	
Min.~Max. Heating BTU/h	5,000~25,600		5,000~29,000		9,200~42,700		14,300~54,600	
HSPF BTU/hW	8.5		8.5		8.5		8.5	
SEER BTU/hW	16.0		15.0		14.0		15.0	
EER Clg/Htg	11.1 / 10.2		10.6 / 10.2		8.1 / 9.7		9.2 / 10.5	
Clg. Operating Range °F(°C)	0~115 (-18~46)		0~115 (-18~46)		0~115 (-18~46)		0~115 (-18~46)	
Htg. Operating Range °F(°C)	14~75 (-10~24)		14~75 (-10~24)		14~75 (-10~24)		0~75 (-18~24)	
Moisture Removal Pt./h(l/h)	5.3 (2.5)		6.4 (3.0)		8.5 (4.0)		11.6 (5.5)	
Voltage/Frequency/Phase	208-230/60/1		208-230/60/1		208-230/60/1		208-230/60/1	
Recommended Fuse Size (A)	20		20		30		30	
Air Circ. C.F.M. (m ³ /h): Hi	559 (950)		618 (1,050)		942 (1,600)		1,000 (1,700)	
Medium	477 (810)		536 (910)		824 (1,400)		854 (1,450)	
Low	394 (670)		436 (740)		677 (1,150)		736 (1,250)	
Noise Level dB(A): Hi	42/40 (Clg/Htg)		45/43 (Clg/Htg)		48/48 (Clg/Htg)		50/50 (Clg/Htg)	
Medium	39/38 (Clg/Htg)		43/39 (Clg/Htg)		45/45 (Clg/Htg)		48/48 (Clg/Htg)	
Low	36/36 (Clg/Htg)		38/35 (Clg/Htg)		41/41 (Clg/Htg)		44/44 (Clg/Htg)	
Outdoor Fan Speed RPM	780/780		850/900		850/900		850/750	
Outdoor Noise Level dB(A)	51/53 (Clg/Htg)		53/55 (Clg/Htg)		54/55 (Clg/Htg)		55/56 (Clg/Htg)	
Current Rated/Max (A): Cooling	7.0/12.5		9.2/12.5		18.3/18.8		20.3/21.7	
Heating	8.9/12.5		10.4/12.5		16.1/18.8		18.8/21.7	
Power Use Rated/Max (kw): Clg	1.61/2.88		2.10/2.88		4.22/4.35		4.66/4.99	
Heating	2.05/2.88		2.37/2.88		3.70/4.35		4.31/4.99	
Fan Speeds Stage	3 + Auto		3 + Auto		3 + Auto		3 + Auto	
Air Direction: Horizontal	-		-		-		-	
Vertical	Automatic		Automatic		Automatic		Automatic	
Air Filter	Washable		Washable		Washable		Washable	
Front Grille	Removable		Removable		Removable		Removable	
Connection Method	Flare		Flare		Flare		Flare	
Combined Max. Lgth Ft (m)	165 (50) Each		165 (50) Each		165 (50) Each		230 (70) Each	
Max. Vertical Diff. Ft (m)	65 (20)		65 (20)		98 (30)		98 (30)	
Conn. Pipe Diameter Inch	Suc. 1/2	Dis. 1/4	Suc. 5/8	Dis. 3/8	Suc. 5/8	Dis. 3/8	Suc. 5/8	Dis. 3/8
Net Weight lbs. (kg)	75 (34)	141 (64)	75 (34)	141 (64)	82 (37)	141 (64)	88 (40)	231 (105)
Dimensions: Height Inch	9-3/4	32-3/4	9-3/4	32-3/4	11-5/8	32-3/4	11-5/8	50-7/8
mm	246	830	246	830	296	830	296	1290
Width Inch	32-3/4	35-1/2	32-3/4	35-1/2	32-3/4	35-1/2	32-3/4	35-1/2
mm	830	900	830	900	830	900	830	900
Depth Inch	32-3/4	13	32-3/4	13	32-3/4	13	32-3/4	13
mm	830	330	830	330	830	330	830	330
Refrigerant	R410A		R410A		R410A		R410A	
	Indoor AUU18RCLX	Outdoor AOU18RLX	Indoor AUU24RCLX	Outdoor AOU24RLX	Indoor AUU36RCLX	Outdoor AOU36RLX	Indoor AUU42RCLX	Outdoor AOU42RLX

Note: Figures are based on 230 Volts.



Ceiling and Universal Mounted Systems

SYSTEMS 18RULX, 24RULX, 36RSLX



Function

The 18RULX and the 24RULX are universal mount. They can mount low on the floor or low on the wall; mount high enough for a vacuum to get under them, or transverse mount them on the ceiling. The 36RSLX can only be mounted on the ceiling, can take in fresh air and can throw air farther.

Standard Features

- Wireless Remote Control
- 24 Hour Timer
- Dry Mode
- Auto Louver: 4 Way
- Auto Mode
- Pump Down Operation
- Auto Restart/Reset
- Auto Changeover
- Low Ambient
- Cold Prevention
- Energy Saver
- Fresh Air Intake*

Optional Remote

- Full Function Wired Remote
- Weekly Timer
- Remote Controller Sensor
- Child Lock Capable
- Controls Up To 16 Systems

UTY-RNBYU



Applications

The universal mount 18RULX and 24RULX are ideal for a house of worship to mount beneath stained glass windows. Lower in height than the pews, they do not disturb the aesthetics of the space. With long piping lengths of 165' the outdoor units can also be placed remotely out of sight. Another popular application for this model is in hallways where wall space is limited. The 36RSLX is popular where fresh air intake and high capacity is required like a restaurant or bar. They are also often suspended from threaded rod and used in multiple to condition large warehouse spaces.

*Fresh air knockout available. Fresh air fan and ductwork field supplied. See Design and Technical Manual for details

	18RULX Heat Pump	24RULX Heat Pump	36RSLX Heat Pump
Nominal Cooling BTU/h	17,800	22,200	34,100
Min.-Max. Cooling BTU/h	5,000~21,600	5,000~27,300	8,500~36,000
Nominal Heating BTU/h	21,500	24,000	36,500
Low Heating 17°F BTU/h	13,000	15,000	23,400
Min.-Max. Heating BTU/h	5,000~25,600	5,000~29,000	9,200~42,700
HSPF BTU/hW	8.5	8.5	8.5
SEER BTU/hW	16.0	15.0	14.0
EER Clg/Htg	10.9/9.6	9.9/10.2	8.1/10.4
Clg. Operating Range °F(°C)	0~115 (-18~46)	0~115 (-18~46)	0~115 (-18~46)
Htg. Operating Range °F(°C)	14~75 (-10~24)	14~75 (-10~24)	14~75 (-10~24)
Moisture Removal Pt./h(l/h)	5.3 (2.5)	7.4 (3.5)	7.4 (3.5)
Voltage/Frequency/Phase	208-230/60/1	208-230/60/1	208-230/60/1
Recommended Fuse Size (A)	20	20	30
Air Circ. C.F.M. (m³/h): Hi	459 (780)	518 (880)	1089 (1850)
Medium	383 (650)	436 (740)	977 (1660)
Low	324 (550)	371 (630)	842 (1430)
Noise Level dB(A): Hi	43/43 (Clg/Htg)	47/47 (Clg/Htg)	48/48 (Clg/Htg)
Medium	39/39 (Clg/Htg)	43/43 (Clg/Htg)	45/43 (Clg/Htg)
Low	35/35 (Clg/Htg)	38/38 (Clg/Htg)	41/39 (Clg/Htg)
Outdoor Fan Speed RPM	780/780	850/900	850/900
Outdoor Noise Level dB(A)	51/53	53/55	54/55
Current Rated/Max (A): Cooling	7.1/12.5	9.8/12.5	18.3/18.8
Heating	9.8/12.5	10.2/12.5	15.3/18.8
Power Use Rated/Max (kw): Cooling	1.63/2.88	2.25/2.88	4.22/4.35
Heating	2.25/2.88	2.35/2.88	3.50/4.35
Fan Speeds Stage	3 + Auto	3 + Auto	3 + Auto
Air Direction: Horizontal	Automatic	Automatic	Automatic
Vertical	Automatic	Automatic	Automatic
Air Filter	Washable	Washable	Washable
Front Grille	Permanent	Permanent	Permanent
Connection Method	Flare	Flare	Flare
Combined Max. Lgth Ft (m)	165 (50)	165 (50)	165 (50)
Max. Vertical Diff. Ft (m)	66 (20)	66 (20)	98 (30)
Conn. Pipe Diameter Inch	Suc.1/2 Dis. 1/4	Suc.5/8 Dis. 3/8	Suc.5/8 Dis. 3/8
Net Weight lbs. (kg)	62 (28)	141 (64)	106 (48)
Dimensions: Height Inch	7-7/8	32-3/4	7-7/8
mm	199	830	199
Width Inch	39-1/8	35-1/2	39-1/8
mm	990	900	990
Depth Inch	25-7/8	13	25-7/8
mm	655	330	655
Refrigerant	R410A	R410A	R410A

Indoor ABU18RULX Outdoor AOU18RULX Indoor ABU24RULX Outdoor AOU24RULX Indoor ABU36RSLX Outdoor AOU36RSLX

Note: Figures are based on 230 Volts.



Warning

Always use a licensed installer or contractor to install this product. Do not try to install the product yourself. Improper installation can result in water or refrigerant leakage, electrical shock, fire or explosion. Use only parts and accessories supplied or specified by Fujitsu. Ask a licensed contractor to install parts and accessories. Use of unauthorized or improper installation of parts and accessories can result in injury or property damage. Read the owner's operation manual carefully before using this product. The owners operation manual provides important safety instructions and warnings which should be followed closely. For any questions or concerns, please contact Fujitsu General America, Inc.

Trademarks

The Fujitsu logo is a registered trademark of Fujitsu Limited. The Halcyon logo and name is a trademark of Fujitsu General America, Inc. ENERGY STAR® is a registered trademark of the EPA and DOE. Copyright © 2010 Fujitsu General America, Inc.

Fujitsu's products are subject to continuous improvements. Fujitsu reserves the right to modify product design, specifications and information in this brochure without notice and without incurring any obligations.

Proper sizing and installation of equipment is critical to achieve optimal performance. Split system air conditioners and heat pumps must be matched with appropriate coil components to meet ENERGY STAR criteria. Ask your contractor for details or visit www.energystar.gov.

Accessories and Recommendations

Replacement Air Filter:

- 9CQ, 12CQ, 15RLQ, 18RLQ, 9RMLQ, 12RMLQ, and 18RMLQ - 6 to 8 year life expectancy plasma filter: • Cartridge Filter • Media 9RL, 12RL, 9RLS, 12RLS, 18CL, 18RLXS, 24CL, 24RLXS, 30CLX, 30RLX, 36CLX:
- Apple Catechin Filter (3 to 12 month life expectancy, depending on room conditions and usage.)
 - Ion Deodorizing Filter (The filter can be used for approximately 3 years if it is washed under water to restore its surface action when it is dirty.)

Condensate Pumps: Fujitsu condensate pump is available for System 36RSLX. Part Number UTR-DPB241. All other models can be fitted with a condensate pump, field supplied.

Low Ambient Operation: Systems can operate in cooling mode even when outdoor ambient is 0°F, 14°F or 32°F, depending on model, without modification. Operation outside of factory specification is not recommended.

For more information, contact your local representative or distributor; or contact Fujitsu General America, Inc.

Fujitsu Model Nomenclature

Model	36	R	M	L	Q
ASU	Wall Mount	R = Reverse cycle heat pump	M = Multi-Zone	L = Inverter	Q = IAQ
ABU	Universal Mount	C = Cooling only	C = Cassette	X = Extended Line Set	X = Extended Line Set
ARU	Concealed Ceiling		S = Ceiling Suspended	Q = IAQ	
AUU	Cassette Mount		L = Inverter	S = Super Efficient	
AOU	Outdoor Unit		U = Universal		

Certifications

ISO

ISO14001 is the standard defined by the International Organization for Standardization (ISO) related to environmental management systems. Fujitsu General America, Inc. has been acknowledged by an internationally accredited compliance organization as having an appropriate program of environmental protection procedures and activities to meet the requirements of ISO14001. The air conditioners manufactured by Fujitsu have received ISO9001 series certification for quality assurance.

- ISO9001
- ISO14001



ASTM 117 Note

Our outdoor units shall withstand 1,000 hours of salt spray tested per procedure ASTM B117.

MEA

Systems 9CQ, 12CQ, 18CL, 24CL, 30CLX, 36CLX is 393-06-E. All heat pump models have an MEA# of 241-06-E.

Heat Pump Disclaimer

In most climates a heat pump will handle all of your heating needs. However, this system sometimes requires some other additional source of heat to satisfy heating requirements in the coldest environments. Almost all of Fujitsu's heat pumps use inverter technology and as such offer a wider operating range and more heat capacity than a standard heat pump but will not provide adequate heating if improperly sized or operated outside of its operating range. Specifications vary by model; please consult your contractor before choosing a heat pump as your only source of heat.

Complete System Warranty

2 Year - Parts

6 Years - Compressor

Note: Condensing units come pre-charged from factory. Additional refrigerant may be required, be sure to check installation manual for more details.

- Cooling capacity is based on the following conditions:
 - Indoor temperature: 80°F DB/67°F WB (26.7°C DB/19.4°C WB)
 - Outdoor temperature: 95°F DB/75°F WB (35°C DB/23.9°C WB)
- Heating capacity is based on the following conditions:
 - Indoor temperature: 70°F DB (21.1°C DB)
 - Outdoor temperature: 47°F DB/43°F WB (8.3°C DB/6.1°C WB)



RoHS Compliant

Fujitsu participates in the RoHS Directive, which is the Restriction of Hazardous Substances in electrical and electronic equipment. It is an EU directive intended protect the environment by forcing manufacturers to eliminate or severely curtail the use of cadmium, hexavalent chromium, and lead in all products from automobiles to consumer electronics.





**For over 35 years,
making the hottest places cool
and the coolest places
more comfortable.**

Several Energy Star® Fujitsu systems qualify for a residential Federal Tax Credit of up to \$1,500, which applies to equipment cost and labor.

Halcyon Mini-Splits are for you if:

- Central air quotes give you sticker shock
- You don't want to lose closet space to ductwork
- Your upstairs is a different temperature than your downstairs
- Your window air conditioner's noise prevents you from experiencing Zen

Halcyon 



Distributed by:

FUJITSU

Fujitsu General America, Inc.
353 Route 46 West
Fairfield, NJ 07004
Toll Free: (888) 888-3424
Local: (973) 575-0380
Fax: (973) 836-0447
Email: hvac@fujitsugeneral.com
www.fujitsugeneral.com

A subsidiary of
Fujitsu General Limited