

SPLIT TYPE  
AIR CONDITIONER

CASSETTE type (60Hz)

---

# SERVICE MANUAL

Models	Indoor unit	Outdoor unit
	AUU36RC	AOU36RC
	AUU42RC	AOU42RC

# S P E C I F I C A T I O N S

TYPE		COOLING & HEATING	
MODEL	IN	AUU36RC	AUU42RC
	OUT	AOU36RC	AOU42RC
COOLING CAPACITY	BTW/h	36000 - 35500	42000 - 46000
HEATING CAPACITY	BTW/h	43000 - 42000	48000 - 46000

## ELECTRICAL DATA

POWER SOURCE	V	230 - 208	
	∅/Hz	1 / 60	
RUNNING CURRENT (A)	COOL	16.0 - 17.0	19.5 - 21.0
	HEAT	18.0 - 19.5	21.0 - 23.0
INPUT WATTS (kW)	COOL	3.55 - 3.50	4.35 - 4.28
	HEAT	3.95 - 3.90	4.75 - 4.68
E.E.R (BTW/h)	COOL	10.1 - 10.1	9.6 - 9.3
	HEAT	10.9 - 10.8	10.1 - 9.8
STARTING CURRENT	A	104	137
MOISTURE REMOVAL	ℓ/h	4.1	5.4

## COMPRESSOR

TYPE	Hermetic type, Permanent Split Condenser, 2 pole, Single phase, Induction motor	
CODE	ZR40K3-PFV-501	ZR48K3-PFV-501

## FAN MOTOR

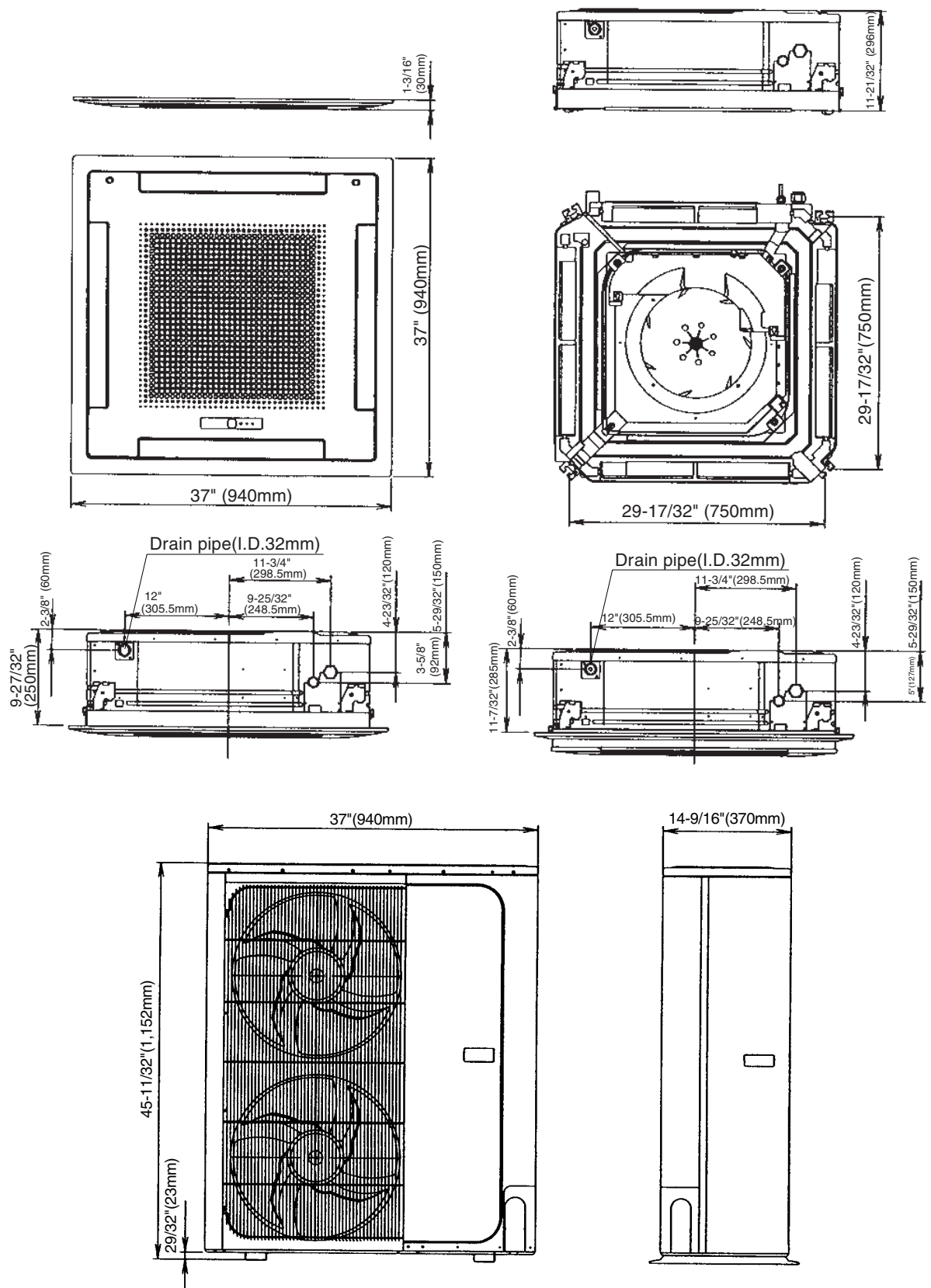
FAN SPEED (r.p.m.)	INDOOR	HIGH	650	660
		MED	590	600
		LOW	520	540
	OUTDOOR		790	
AIR CIRCULATION-H:	INDOOR	m³/h	1000 (1700)	1012 (1720)
	OUTDOOR		3470	

DIMENSIONS H x W x D (mm)	NET	IN	11 - 21/32" x 32 - 5/8"x32 - 5/8	
		GRILLE	1 - 3/8" x 37" x 37"	
		OUT	45 - 11/32" x 37" x 14 - 9/16"	
WEIGHT [NET/GROSS] lbs(kg)		IN	88 / 117	
		OUT	220 / 251 (100 / 114)	243 / 273 (110 / 124)
MAX PIPE LENGTH/HEIGHT		ft (m)	164 / 99	
REMOTE CONTROLLER TYPE			WIRED	

## ADDITIONAL REFRIGERANT CHARGE

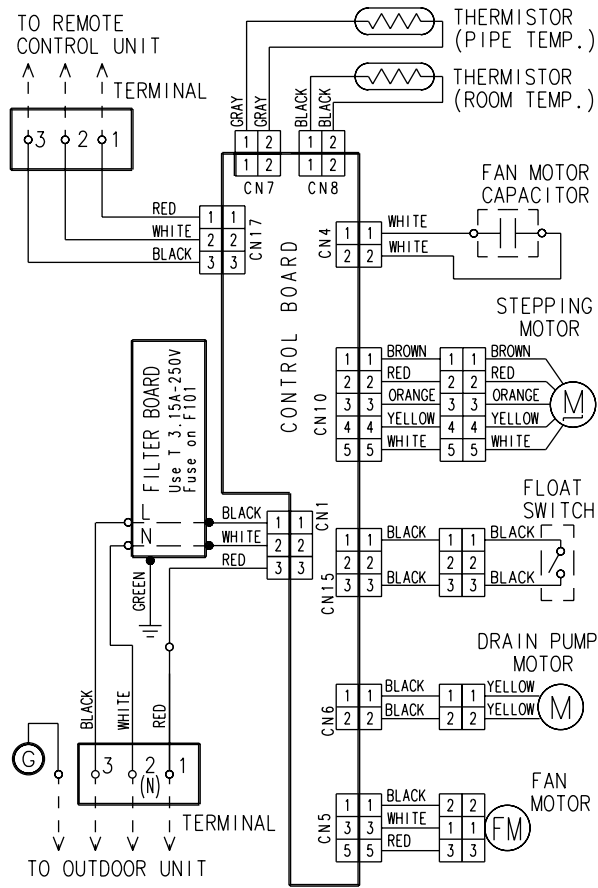
PIPE LENGTH		10 m (33 ft)	20 m (66 ft)	30 m (99 ft)	40 m (132 ft)	50 m (164 ft)	Additional refrigerant
FULL CHARGE AMOUNT R22	AUU36RC	3200 g (112.9 oz)		3600 g (127.0 oz)	4000 g (141.1 oz)	4400 g (125.2 oz)	40 g/m (0.43 oz / 3.3 ft)
	AUU42RC	3500 g (123.5 oz)		3900 g (137.6 oz)	4300 g (151.7oz)	4700 g (148.2 oz)	

# DIMENSIONS

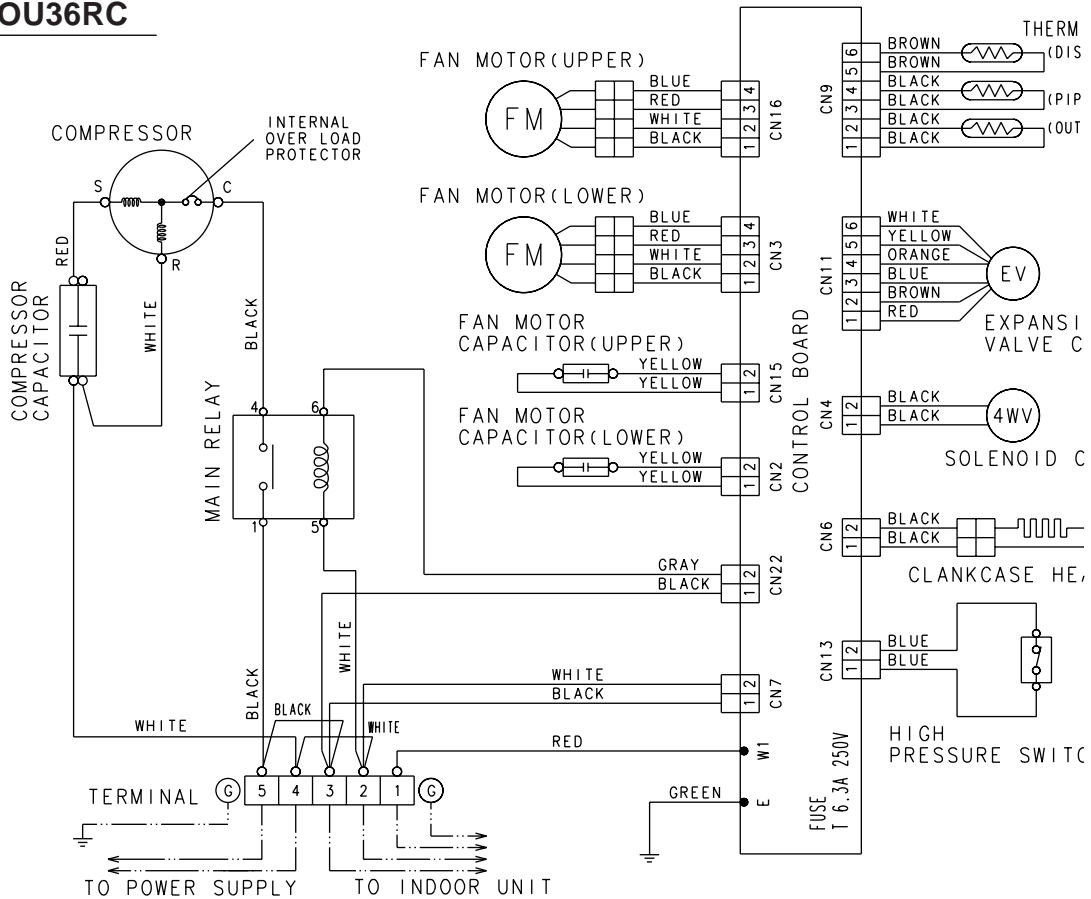


# CIRCUIT DIAGRAM

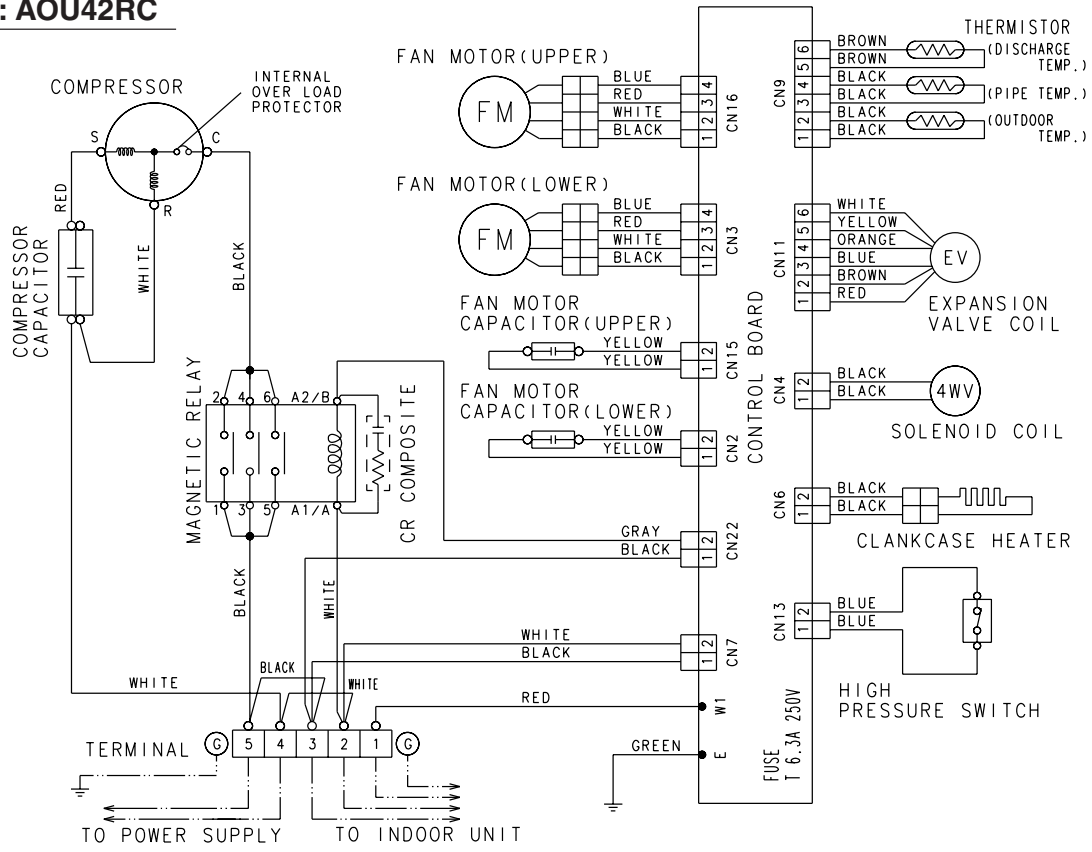
Models : AUU36RC  
AUU42RC



Model : AOU36RC

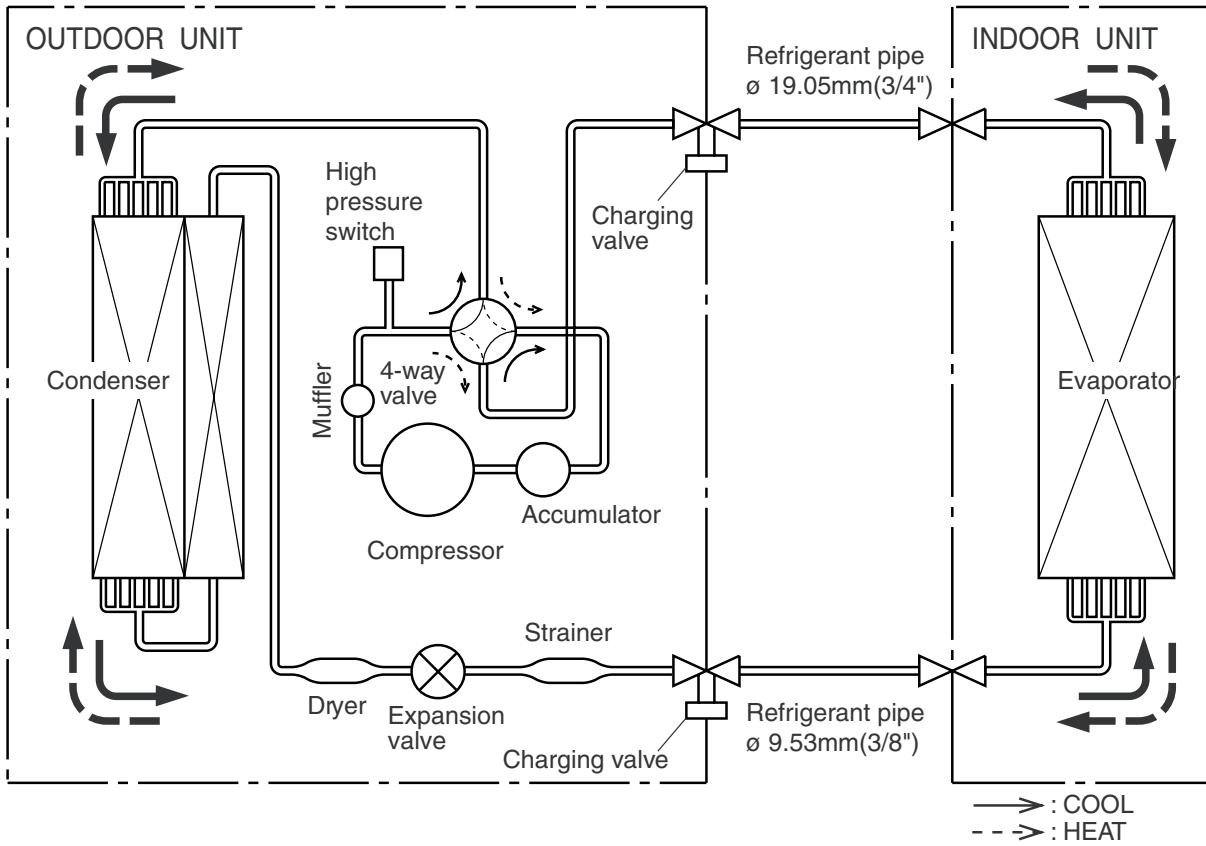


# Model : AOU42RC



# REFRIGERANT SYSTEM DIAGRAM

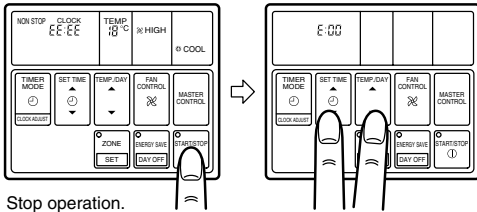
Models : AUU36RC / AOU36RC  
AUU42RC / AOU42RC



# ERROR CONTENTS

## 1. REMOTE CONTROLLER

¥ When EE : EE blinks at the current time display, there is an error inside the air conditioner. If the SET TIME button (▼) and TEMP./DAY button (▼) are pressed simultaneously for more than three seconds, the self diagnosis check will start and the error contents will be displayed at the current time display. When the operation lamp lights, press the START/STOP button and after operation lamp goes off, perform the same operation. Process the error contents by referring to (Table 1).



Stop operation.

Table 1

Error cord	Error contents
E:00	Communication error (indoor unit ↔ remote controller)
E:01	Communication error (indoor unit ↔ outdoor unit)
E:02	Room temperature sensor open
E:03	Room temperature sensor shortcircuited
E:04	Indoor heat exchanger temperature sensor open
E:05	Indoor heat exchanger temperature sensor shortcircuited
E:06	Outdoor heat exchanger temperature sensor open
E:07	Outdoor heat exchanger temperature sensor shortcircuited
E:08	Power source connection error
E:09	Float switch operated
E:0A	Outdoor temperature sensor open
E:0b	Outdoor temperature sensor shortcircuited
E:0c	Discharge pipe temperature sensor open
E:0d	Discharge pipe temperature sensor shortcircuited
E:0E	Outdoor high pressure abnormal
E:0F	Discharge pipe temperature abnormal
E:11	Model abnormal
E:12	Indoor fan abnormal
E:13	Outdoor signal abnormal
E:14	Outdoor EEPROM abnormal

¥ To stop test running, press the START/STOP button.

¥ For the operation method, refer to the operating manual and perform operation check.

¥ Check that there are no abnormal sounds or vibration sounds during test running.

## 2. OUTDOOR UNIT

When the outdoor temperature drops, the outdoor unit's fans may switch to low speed, or one of the fans may stop intermittently.

### ERROR : Heat & Cool model (Reverse cycle) only

The LED lamps operate as follows (Table 2) according to the error contents.

The LED lamps are on the outdoor unit board.

Table 2

Error contents	LED1	LED2	LED3	LED4	LED5	LED6
Signal abnormal	—	—	X	○	X	X
Indoor unit abnormal	—	—	X	X	○	X
Discharge pipe temperature abnormal	—	—	X	X	X	○
Outdoor heat exchanger temperature abnormal	—	—	X	X	○	○
Outdoor temperature abnormal	—	—	X	○	X	○
Power source connection error	—	—	○	X	X	X
EEPROM abnormal	—	—	○	○	○	○
	◎	◎	◎	◎	◎	◎
Outdoor high pressure abnormal	○	—	—	—	—	—
Discharge pipe temperature abnormal	—	○	—	—	—	—

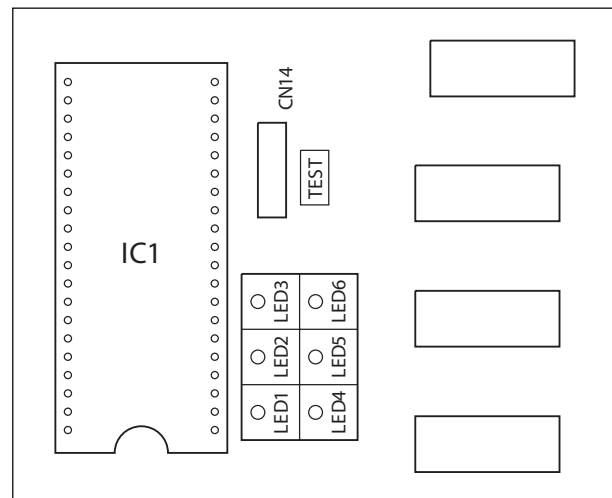
○ : 0.5s ON / 0.5s OFF (flash) X : OFF

◎ : 0.1s ON / 0.1s OFF (flash) — : Indefinite

When the fault is cleared, the LED lamp goes off.

However, for discharge pipe temperature abnormal and high pressure abnormal, the LED lamp lights continuously for 24 hours, as long as the power is not turned off.

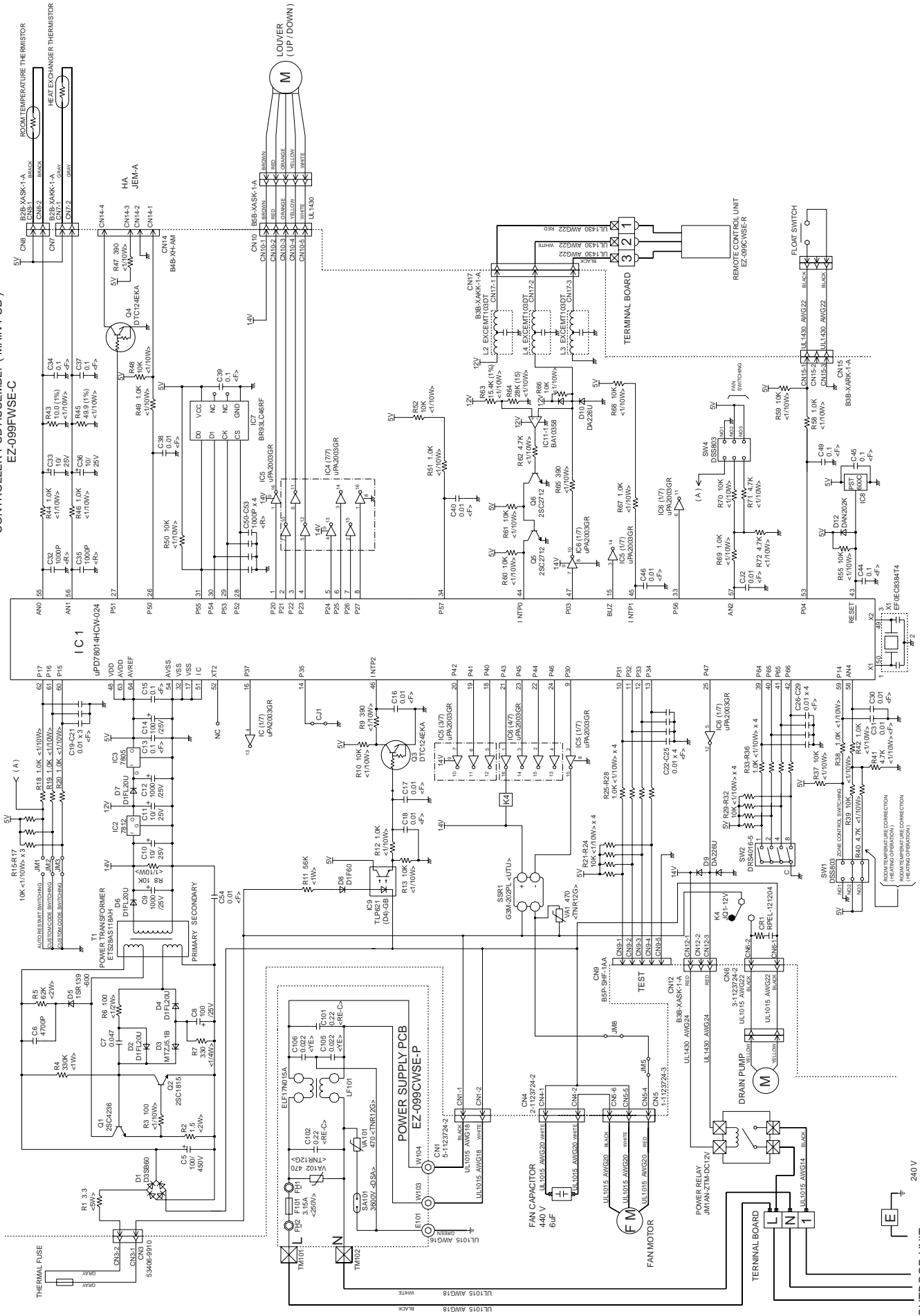
### ERROR LED DISPLAY LAYOUT



# INDOOR PRINTED CIRCUIT BOARD CIRCUIT DIAGRAM

Models : AUU36RC  
AUU42RC

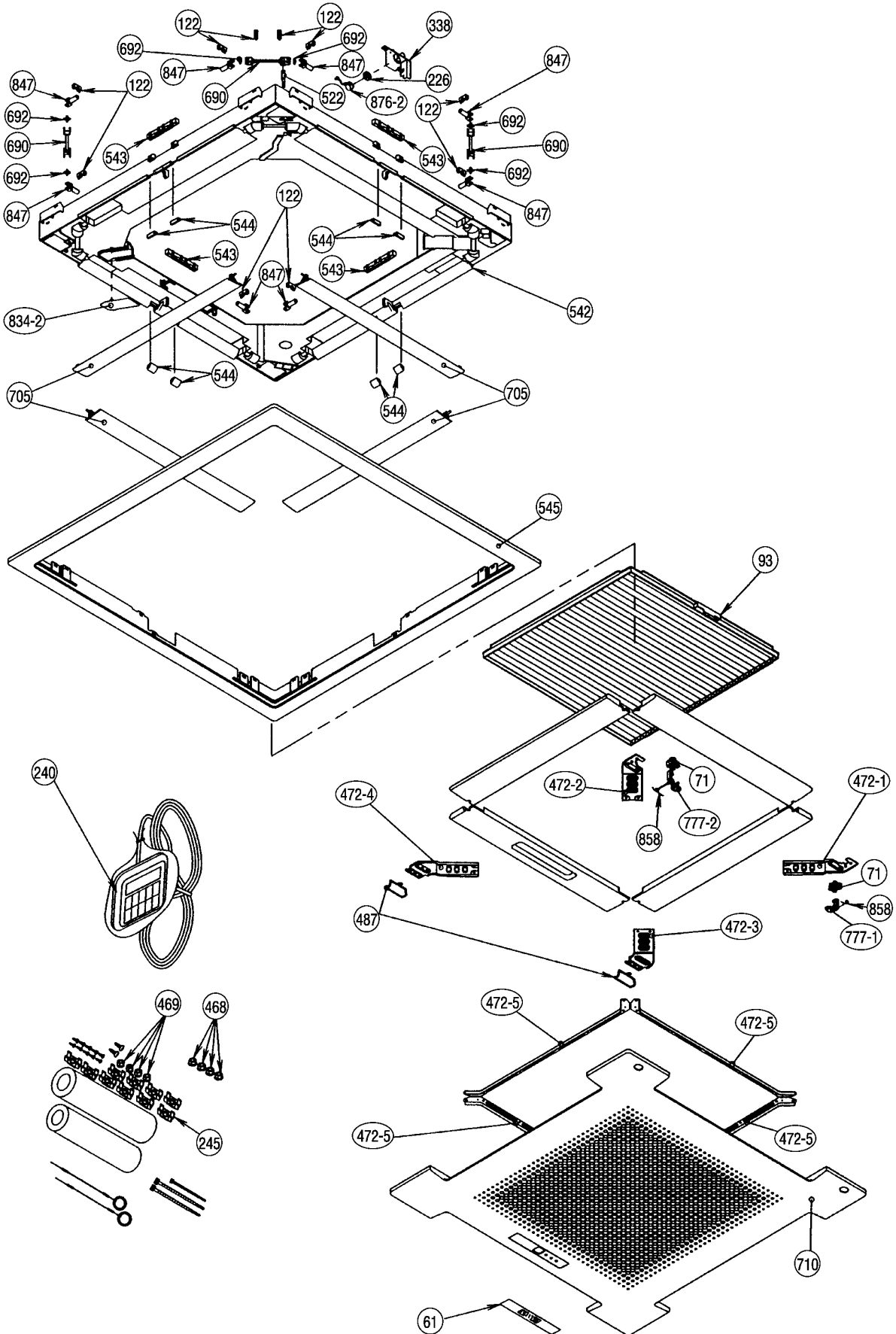
CONTROLLER PCB ASSEMBLY ( MAIN PCB )  
EZ-099FWSE-C

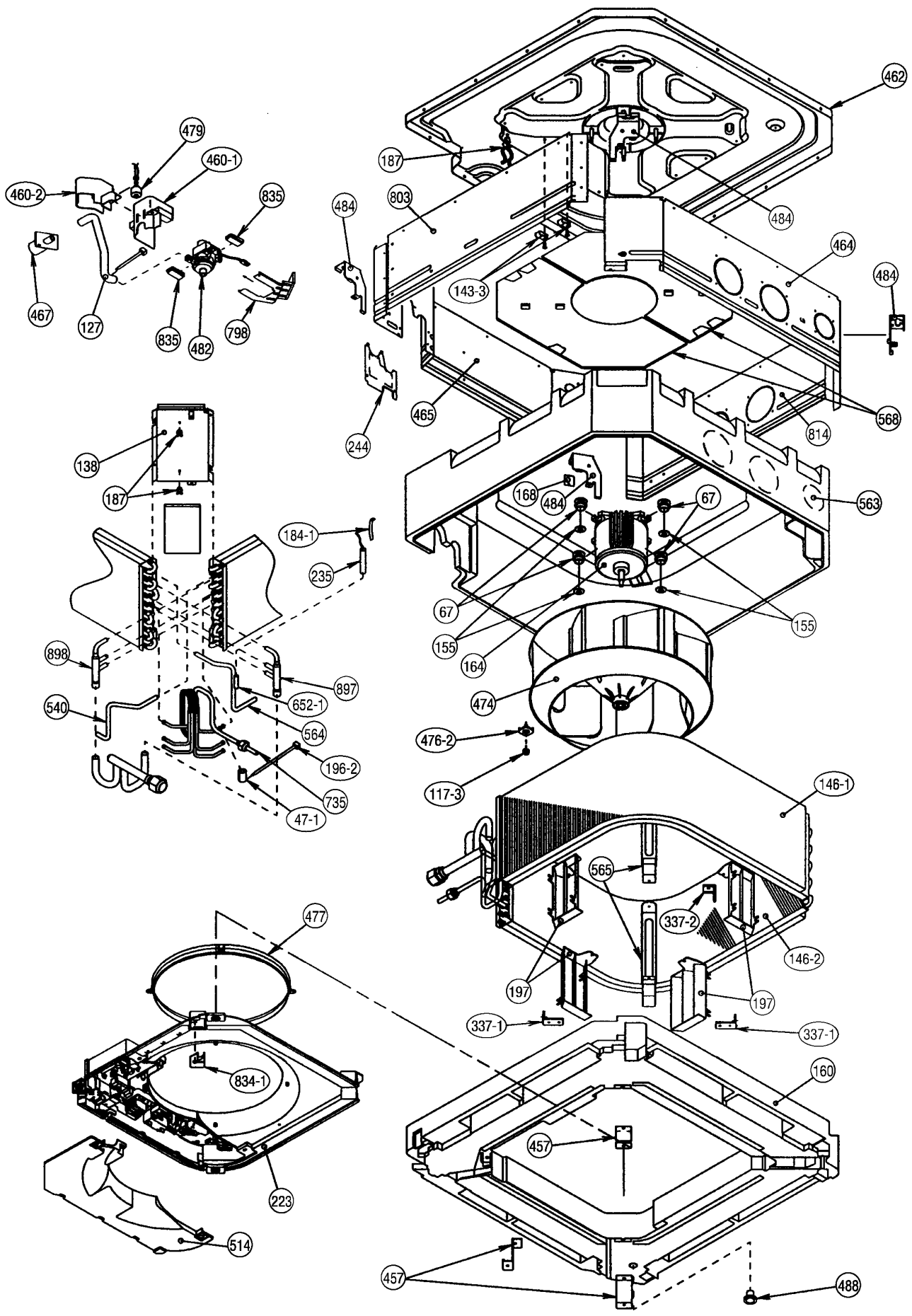


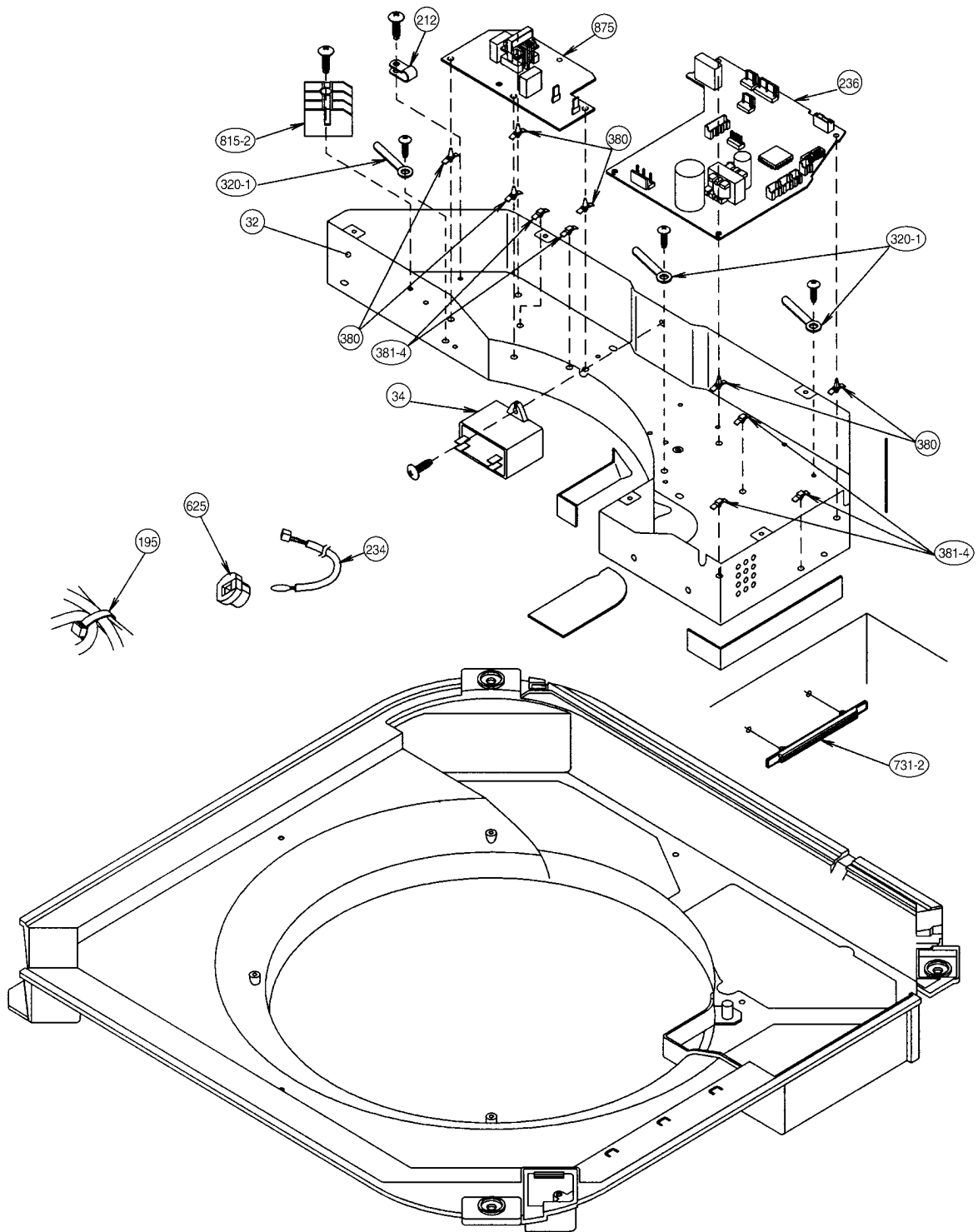


# DISASSEMBLY ILLUSTRATION

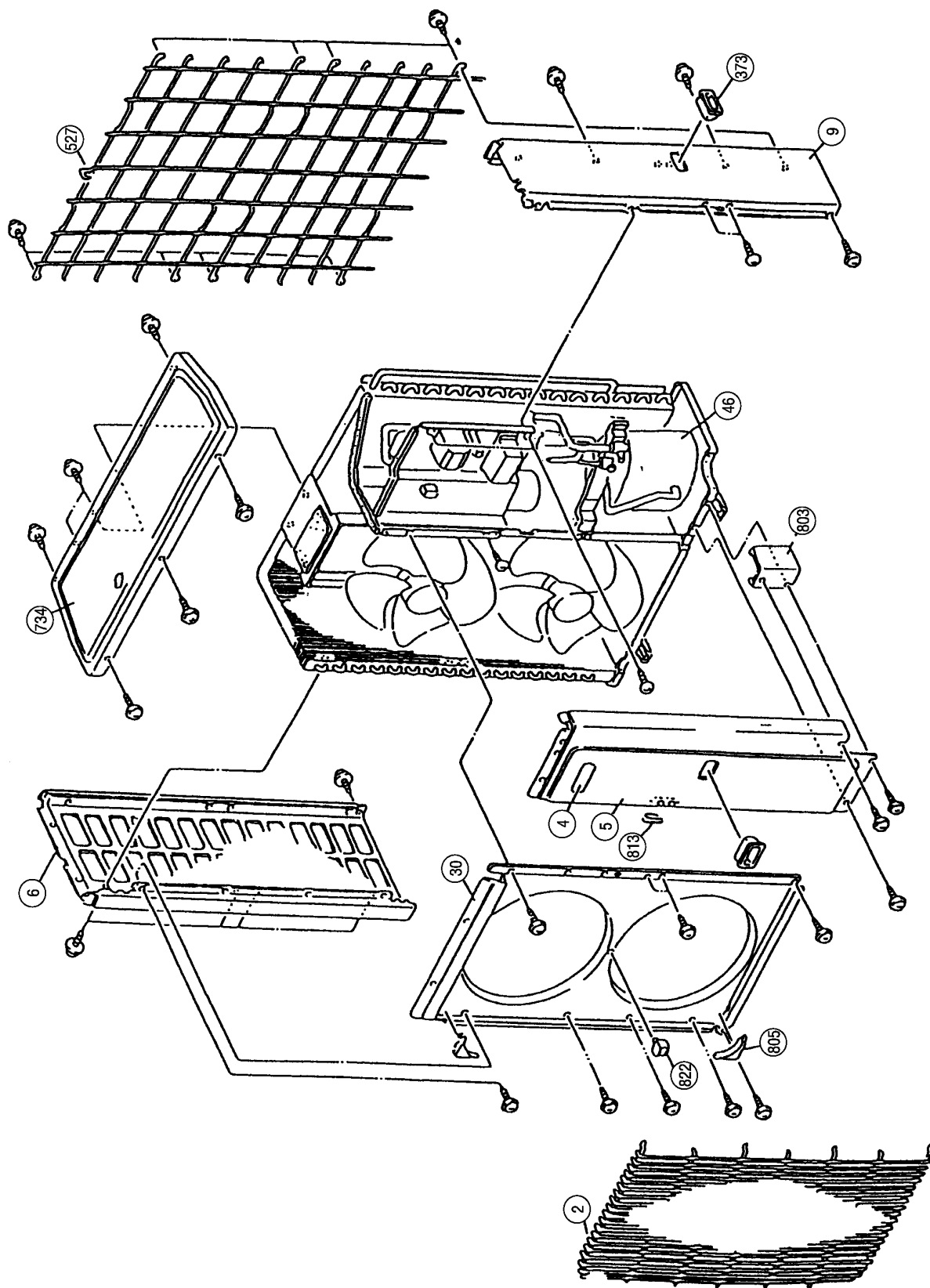
## INDOOR UNIT



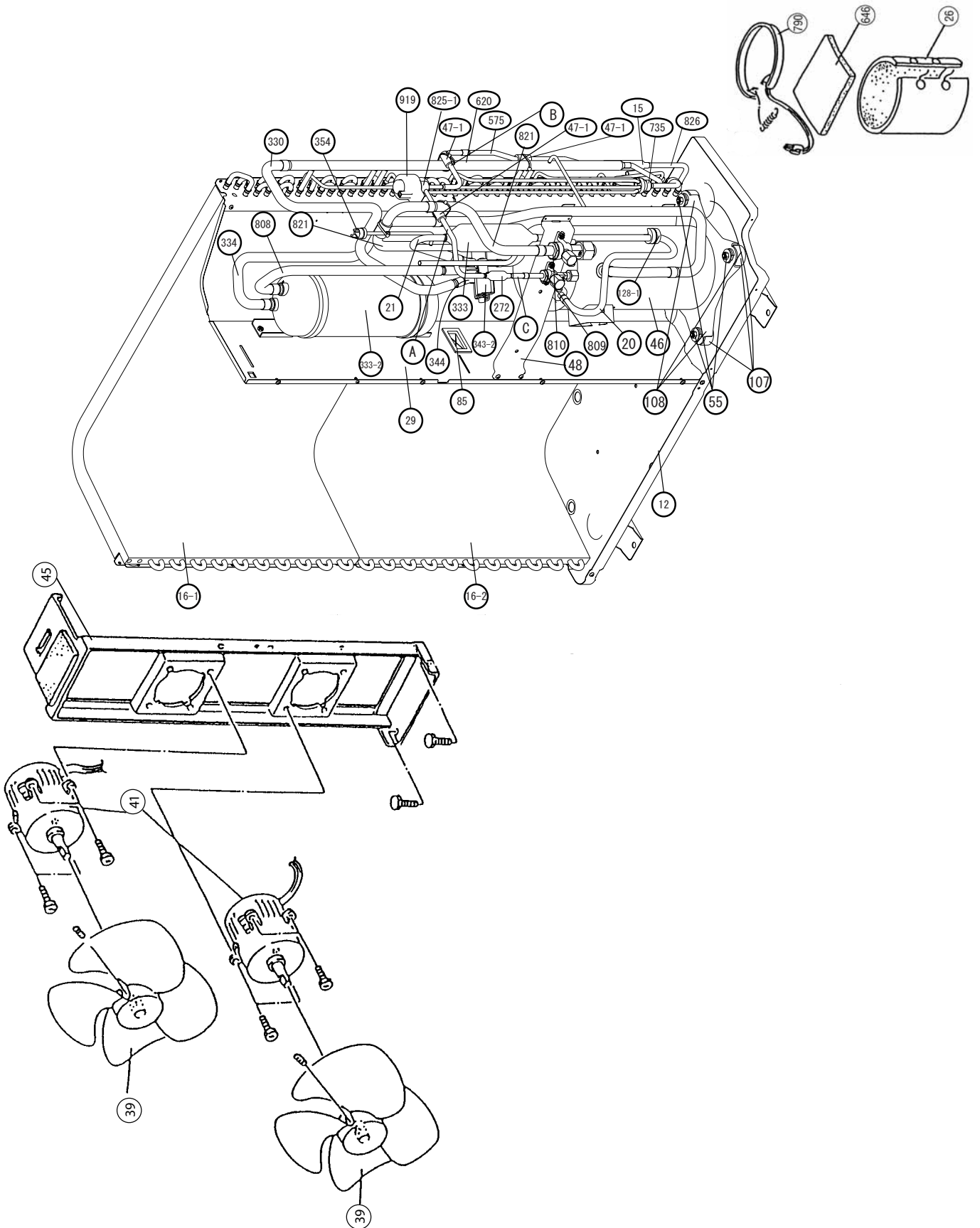




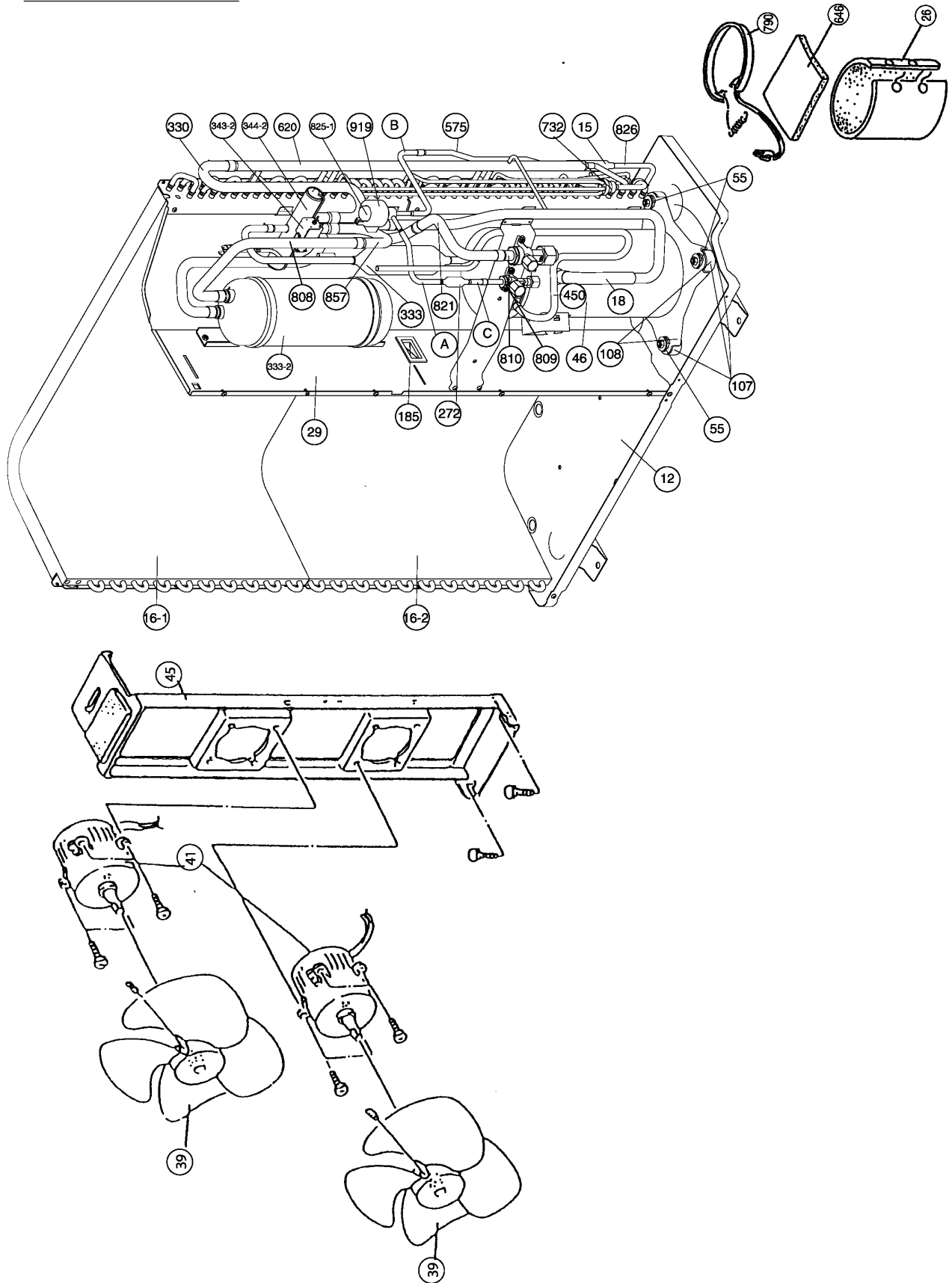
Models : AOY36ACG3L  
AOY36RCG3L



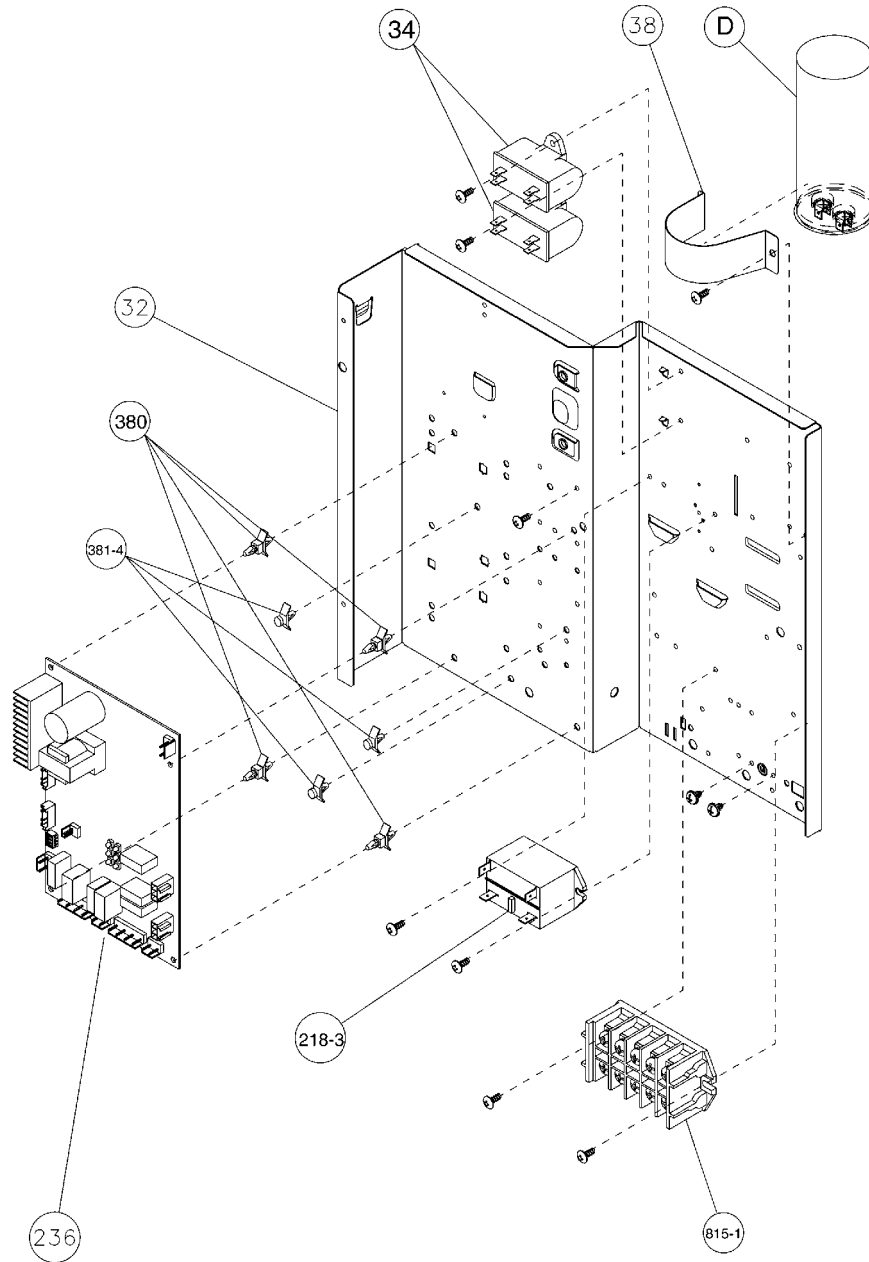
Model : AOU36RC



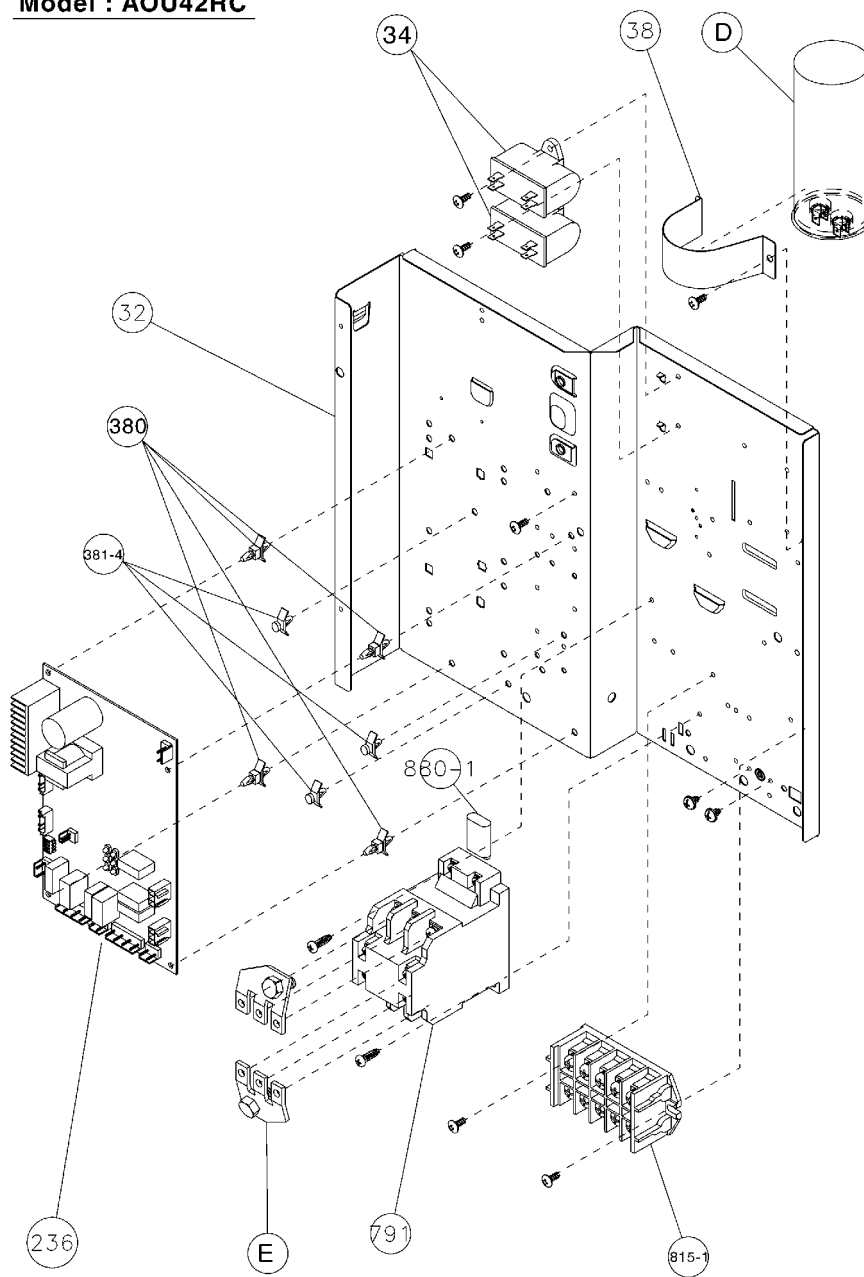
Model : AOU42RC



**Model : AOU36RC**



**Model : AOU42RC**



# PARTS LIST

When you order parts, please make a photocopy of this page and fill the number of the parts in the "Order" column.

## INDOOR UNIT

Ref. No.	Description	Part No.		Ord. Qty	Ref. No.	Description	Part No.		Ord. Qty
		AUU36RC	AUU42RC				AUU36RC	AUU42RC	
32	Control Box Assy	9368533007	9368533007		472-3	Grille Reinforcement •T-C	9362740005	9362740005	
34	Capacitor (Fan Motor)	9703306068	9703306068		472-4	Grille Reinforcement •T-D	9362741002	9362741002	
47-1	Rubber (Discha. Pipe)	313194159807	313194159807		472-5	Grille Reinforcement •T-E	9362742009	9362742009	
61	Decoration Plate	9362787000	9362787000		474	Turbo Fan Assy	9362803014	9362803014	
67	Rubber (Vibration Proof)	9362783002	9362783002		476-2	Special Washer	9362756006	9362756006	
71	Grille Hook Holder	9362782005	9362782005		477	Bellmouth (B)	9362774000	9362774000	
93	Filter	9362766005	9362766005		479	Float Switch	9703285004	9703285004	
117-3	Hex. Nut w / Spring Washer	301721180114	301721180114		482	Pump Unit	9703125010	9703125010	
122	Louver Support Holder	9362799003	9362799003		484	Hook	9362736008	9362736008	
127	Drain Hose	9362784009	9362784009		487	Grille Hinge Wire	9362754002	9362754002	
138	Separate Wall	9362737005	9362737005		488	Drain Pan Plug	313005174654	313005174654	
143-3	Clamp NK-6N	9305657001	9305657001		514	Control Box Cover	9368524005	9368524005	
146-1	Evaporator-A Assy	9363149005	9363149005		522	Joint Gear	9362772006	9362772006	
146-2	Evaporator-B Assy	9363150001	9363150001		999	Bypass Pipe-B	9363152005	9363152005	
155	Special Nut M6	9307615016	9307615016		541	Terminal Base	9368529017	9368529017	
160	Drain Pan Assy	9362804004	9362804004		541-1	Terminal Cover	9368530006	9368530006	
164	Fan Motor Assy-IN	9600878019	9600878019		542	Panel Base	9362759014	9362759014	
168	Cabinet-E	9362735001	9362735001		543	Panel Frame Holder	9362761017	9362761017	
184-1	Thermo. Spring-A	313728262708	313728262708		544	Panel Base Holder	9362760010	9362760010	
187	Clamp No. 1219	313361271706	313361271706		545	Panel Frame	9362758017	9362758017	
195	Clamp SKB-100	313361275805	313361275805		563	Insulation (Inner Box)	9362768009	9362768009	
196-2	Clamp SKB-150	313035356905	313035356905		564	Bypass Pipe-A Assy	9363151008	9363151008	
197	Wind Guide Board	9363117004	9363117004		565	Evaporator Holder Assy	9362802017	9362802017	
223	Control Box	9368523015	9368523015		568	Noise Insulation	9363143003	9363143003	
226	Motor Gear	9362764001	9362764001		625	Cord Bushing	9359240006	9359240006	
234	Thermistor Assy-Room	9703299025	9703299025		652-1	Thermistor Holder Pipe	313806262805	313806262805	
235	Thermistor Assy-Pipe	9703297014	9703297014		690	Joint-A	9362773003	9362773003	
236	Controller PCB Assy	9704557100	—		692	Joint Shaft	9362771009	9362771009	
236	Controller PCB Assy	—	9704557007		705	Louver	9362769013	9362769013	
240	Remote Control Unit	9704339010	9704339010		710	Intake Grille	9362767019	9362767019	
240	Remote Control Unit	9703173028	—		731-2	Holder (Guide Rail)	0600241018	0600241018	
244	Pipe Cover	9362748001	9362748001		735	Distributor Assy	9363154009	9363154009	
245	Cable Clamp	313714181904	313714181904		777-1	Grille Hook-A	9362779012	9362779012	
320-1	Wire Clamp Metal	313483219905	313483219905		777-2	Grille Hook-B	9362778015	9362778015	
334	Wire Cover	9370624007	9370624007		798	Pump Hook Bracket	9362753005	9362753005	
337-1	Reinforcement (Eva.)-A	9362749008	9362749008		803	Cabinet-D	9362734004	9362734004	
337-2	Reinforcement (Eva.)-B	9362750004	9362750004		814	Cabinet-C	9362733007	9362733007	
338	Motor Holder	9362765008	9362765008		815-1	Terminal 3P	9306489083	9306489083	
380	Locking Spacer	313209391403	313209391403		815-2	Terminal 3P	9703345012	9703345012	
381-4	Spacer	0600118075	0600118075		834-1	Wire Cover-A	9362789004	9362789004	
457	Reinforcement (Drain Pan)	9362757003	9362757003		834-2	Wire Cover-B	9362788007	9362788007	
460-1	Pump Cover-A	9362775007	9362775007		835	Cushion Rubber (Pump)	9362777001	9362777001	
460-2	Pump Cover-B	9362776004	9362776004		847	Louver Supporter	9362770019	9362770019	
462	Top Cover Plate	9362806015	9362806015		858	Grille Spring	9362755009	9362755009	
464	Cabinet-A	9362800013	9362800013		875	Filter PCB Assy	9704561015	9704561015	
465	Cabinet-B	9362801010	9362801010		876-2	Step Motor	9360307019	9360307019	
467	Drain Port	9362786003	9362786003		897	Coupling Pipe-A Assy	9363153002	9363153002	
468	Special Nut-A (Large)	313005446653	313005446653		898	Coupling Pipe-B Assy	9363155006	9363155006	
469	Special Nut-B (Small)	313005446759	313005446759						
472-1	Grille Reinforcement•T-A	9362738002	9362738002						
472-2	Grille Reinforcement•T-B	9362739009	9362739009						


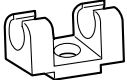
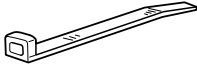




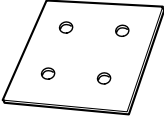

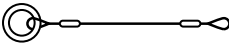
When you order parts, please make a photocopy of this page and fill the number of the parts in the "Order" column.

**OUTDOOR UNIT**





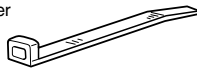

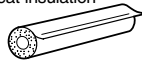


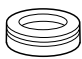
Ref. No.	Description	Part No.		Ord. Qty	Ref. No.	Description	Part No.		Ord. Qty
		AOU36RC	AOU42RC				AOU36RC	AOU42RC	
2	Fan Cover	9359150015	9359150015		344-2	4-Way Valve	-----	9353532008	
4	Emblem-Rear	9351355005	9351355005		354	Pressure Switch	9703667008	9704045003	
5	Cabinet-A, Painted	9352146015	9352146015		381-4	Spacer	0600118075	0600118075	
6	Cabinet-C, Painted	9352149016	9352149016		450	Discharge Pipe-A	-----	9370951028	
9	Cabinet-B, Painted	9352147012	9352147012		527	Protection Net	9352163012	9352163012	
12	Base Assy, Painted	9352136016	9352136016		575	Condensing Pipe-C	9363460001	9363460001	
15	Dryer	9368111014	9368111014		620	Inlet Pipe (Cond.) Assy	9353183002	9353183002	
16-1	Condenser-A Assy	9368409005	9368409005		380	Locking Spacer	313209391403	313209391403	
16-2	Condenser-B Assy	9368536008	9368536008		646	Compressor Cover-B	9364089003	9364089003	
18	Suction Pipe Assy	9370948011	9370948011		678	Bracket (Thermistor)	313557406106	313557406106	
20	Discharge Pipe-A Assy	9370950014	-----		734	Cabinet Top Plate	9352161018	9352161018	
21	Discharge Pipe-B Assy	9368347000	9368331009		735	Distributor Assy	9353187000	9353187000	
26	Compressor Cover-A	9364088006	9364088006		790	Crankcase Heater	9900132019	9900132019	
29	Separate Wall	9355277013	9355277013		791	Magnetic Relay	-----	9900115012	
30	Blower Cover, Painted	9352151019	9352151019		803	Cabinet-D, Painted	9359148012	9359148012	
32	Control Box Metal	9370453010	9370453010		805	Blower Cover Corner	9352160011	9352160011	
34	Capacitor (Fan Motor)	99000130022	99000130022		808	Inlet Pipe (Accumulator)-A	9363464009	9363458008	
38	Capacitor Clamp	9351770013	313791061807		809	Ball Valve-A	9357976006	9357976006	
39	Propeller Fan Assy	9300855013	9300855013		810	Ball Valve-B	9357982007	9357982007	
41	Fan Motor Assy-Out	9600832066	9600832066		373	Grip	9352157004	9352157004	
45	Bracket (Motor) Assy	9352141003	9352141003		813	Cabinet Hook	9352148002	9352148002	
46	Compressor Assy	9370863000	9370864007		815-1	Terminal 5P	9363275018	9363275018	
48	Bracket (Coupler) Assy	9355281010	9355281010		816	Wire Clamp Metal	313584219902	313584219902	
55	Special Nut M8 (For Comp.)	9355091008	9355091008		819	Valve-A Coupl. Pipe	9363457001	9363457001	
107	Rubber Seat-A (For Comp.)	9364084008	9364084008		821	Joint Pipe (Valve-B)	9352284007	9353307002	
108	Sleeve-A (For Comp.)	9364085005	9364085005		822	Fan Cover Fixture-A	9352158018	9352158018	
109	Terminal Cover (For Comp.)	9364087009	9364087009		825	Expansion Valve Assy	9370947017	-----	
111	Terminal Packing	9364086002	9364086002		826	Condensing Pipe-B	9353215000	9353215000	
184-1	Thermo. Spring-A	313728262708	313728262708		842	Cond. Pass Pipe-C	9363460001	-----	
185	Rubber Bushing	313005066051	313005066051		857	Inlet Pipe (Accumulator)-B	-----	9363459005	
236	Controller PCB Assy	9704764034	9704964010		862	Valve-B Coupl. Pipe	-----	9353309006	
272	Strainer Assy	9354139008	9354139008		880-1	Network	-----	9700987017	
327	Suction Pipe-A	9368348007	-----		918	Thermistor Assy	9900129019	9900129019	
330	Inlet Pipe (Cond.)-A	-----	9368334000		919	Expansion Valve Coil	9363467017	9363467017	
333	Accumulator	9350363018	9350363018		A	Expansion Valve A Pipe	9370954012	9363455007	
333-2	Accumulator Assy (B)	9362425001	9362425001		B	Expansion Valve B Pipe	9370954029	9363456004	
334	Suction Pipe-B	9352287008	9352287008		C	Joint Pipe Valve A	9363457001	9363457001	
343	Solenoid Coil	9704046017	9704046017		D	Capacitor (Running)	9703107153	9703107023	
344	4-Way Valve	9353055002	-----		E	Terminal (Three Phase)	-----	9900137014	

# STANDARD ACCESSORIES

## INDOOR UNIT ACCESSORIES

Name and Shape	Part No.
Coupler heat insulation 	9350716029 } 1 each 9352766015 }
Remote control unit cord clamp 	313714181904
Binder 	313035356905 (Large) 313361275805 (Small)
Screw 	(A) 301141134166 For installing the mounting bracket (B) 301141153027 For installing the cord clamp
Special nut A (large flange) 	313005446653
Special nut B (small flange) 	313005446759
Remote control unit 	9704339010
Template 	9363173000
Blower cover insulation 	9363265002
Hook wire 	9363168006

## OUTDOOR UNIT ACCESSORIES

Name and Shape	AOU36RC	AOU42RC
Power cap 	9352173011	9352173011
Auxiliary pipe assembly 	9355292016	9355292016
Edge cover 	9352436000	9352436000
Tapping screw 	301463040100	301463040100
Binder 	313035356905	313035356905
Putty 	303020200114	303020200114
Coupler heat insulation 	313005074759	313005074759
Pipe (drain) 	—	313728031005
Flexible tube 	—	313013042915
Cap (drain) 	—	313166024302

**Parts Orders**

Parts maybe ordered from

FUJITSU GENERAL AMERICA, INC

353 RTE 46 W.

FAIRFIELD NJ 07004 PHONE 1-973-575-0380

FAX 1-973-575-2194

Specify complete Parts No., Model & Description to ensure correct parts are supplied.

FUJITSU GENERAL AMERICA, INC.  
353 ROUTE 46W., FAIRFIELD, N.J. 07004