

**SPLIT TYPE ROOM AIR
CONDITIONER
WALL MOUNTED type**

**SERVICE
MANUAL**



Models

Indoor unit

Outdoor unit

ASU9RQ

AOU9RQ

ASU12RQ

AOU12RQ

CONTENTS

SPECIFICATIONS	1
OUTLINE AND DIMENSIONS	2
REFRIGERANT SYSTEM DIAGRAM	3
CIRCUIT DIAGRAM	4
INDOOR PCB CIRCUIT DIAGRAM	5
DISASSEMBLY ILLUSTRATION	9
PARTS LIST	12

SPECIFICATIONS

INDOOR UNIT		ASU9RQ	ASU12RQ
OUTDOOR UNIT		AOU9RQ	AOU12RQ
COOLING CAPACITY	(BTU / hr)	9,700	12,300
HEATING CAPACITY	(BTU / hr)	9,600	12,800

ELECTRICAL DATA

POWER SOURCE	(V)	115	115
FREQUENCY	(Hz)	60	60
RUNNING CURRENT	(A)		
	COOLING	7.6	9.9
	HEATING	6.5	9.2
INPUT WATTS	(W)		
	COOLING	820	1,070
	HEATING	690	990
SEER		14.3	13.7
MOISTURE REMOVAL	Pts/hr (R /hr)	2.1 (1.0)	3.2 (1.5)
AIR CIRCULATION-Hi	(m ³ /hr)	550	650

COMPRESSOR

TYPE		Hermetic type, Permanent split condenser, 2 pole, Single phase, Induction motor	
DISCRIMINATION		EA89X1C-1FZDU1	EA118X1C-1FZDU1
POWER SOURCE		115V 60Hz	115V 60Hz
REFRIGERANT	R-410A	1.65 lbs. (750 g)	2.2 lbs. (1000 g)

FAN MOTOR

POWER SOURCE	(V)	115	115
INDOOR UNIT	HI	1,290 ± 20 / 1,290 ± 20	1,480 ± 20 / 1,430 ± 20
	MED	1,140 ± 20 / 1,150 ± 20	1,280 ± 20 / 1,260 ± 20
	LO	990 ± 20 / 1,010 ± 20	1,080 ± 20 / 1,090 ± 20
	QUIET	840 ± 20 / 860 ± 20	880 ± 20 / 930 ± 20
	Cool / Heat (r.p.m.)		
OUTDOOR UNIT	(r.p.m.)	640 ± 30	770 ± 30

DIMENSIONS

INDOOR UNIT	H x W x D	(inch)	11-1/8 x 31-1/8 x 9-1/8
		(mm)	283 x 790 x 230
OUTDOOR UNIT	H x W x D	(inch)	21-3/8 x 31-1/8 x 11-1/2
		(mm)	540 x 790 x 290

WEIGHT

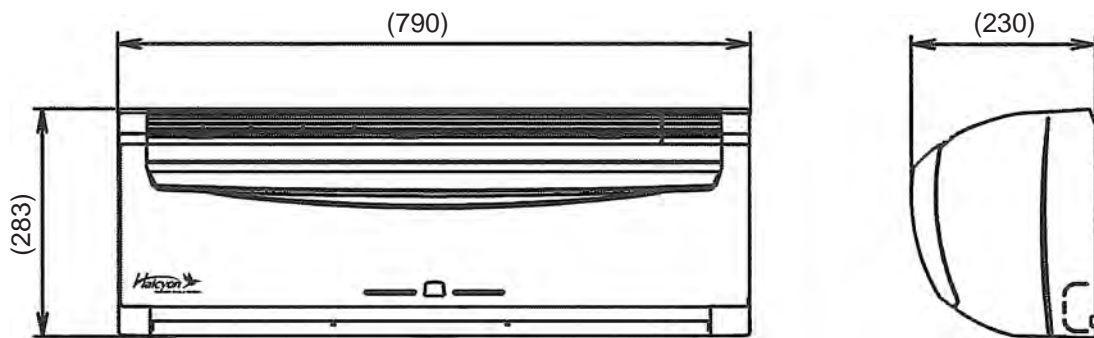
INDOOR UNIT	Gross / Net	26 / 21 lbs. (12 / 9.5 kg)	
OUTDOOR UNIT	Gross / Net	79 / 71 lbs. (36 / 32 kg)	88 / 79 lbs. (40 / 36 kg)

OUTLINE AND DIMENSIONS

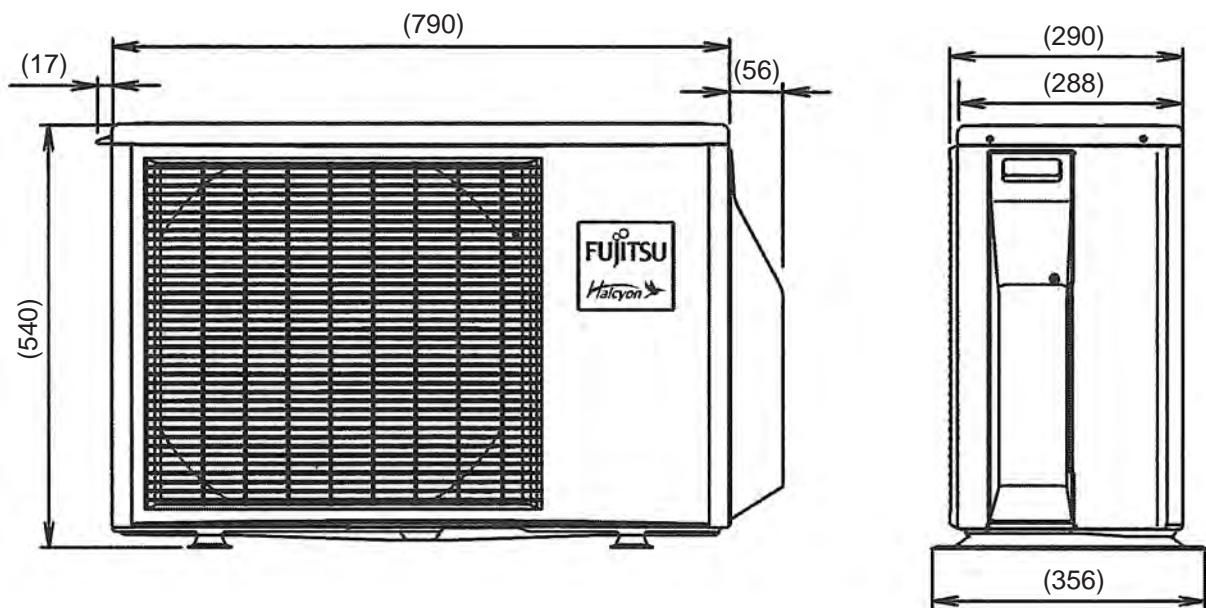
Models : ASU9RQ / AOU9RQ
ASU12RQ / AOU12RQ

Unit : inch (mm)

INDOOR UNIT

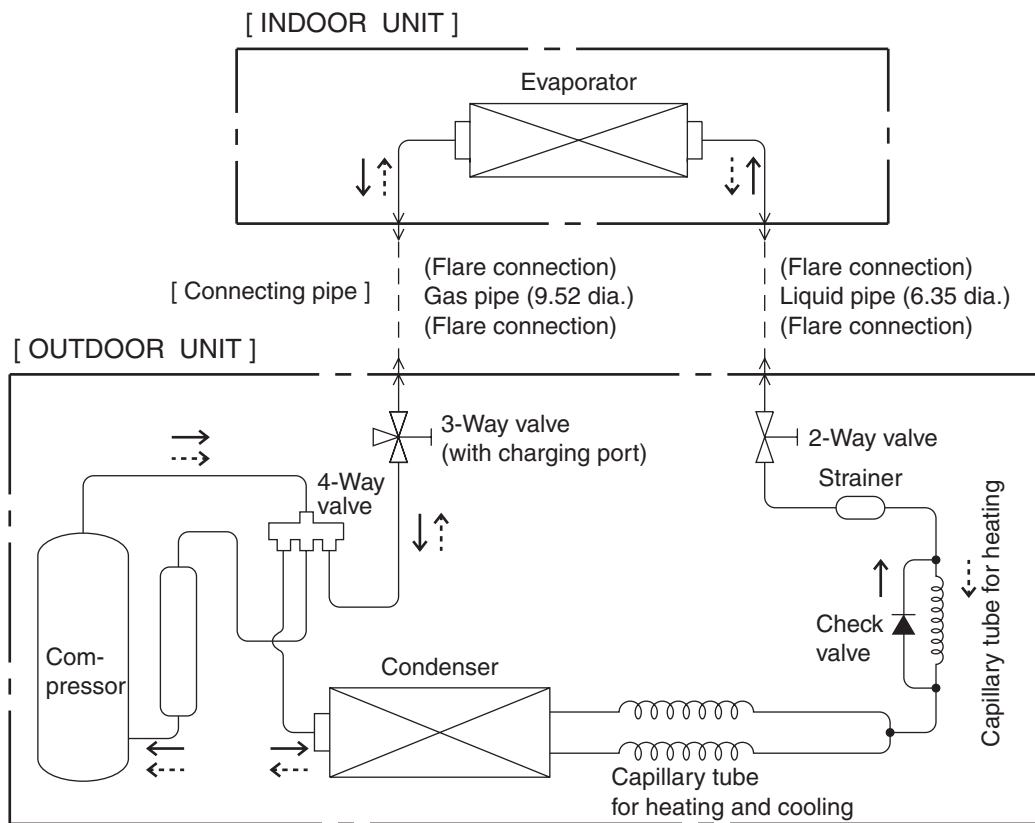


OUTDOOR UNIT



REFRIGERANT SYSTEM DIAGRAM

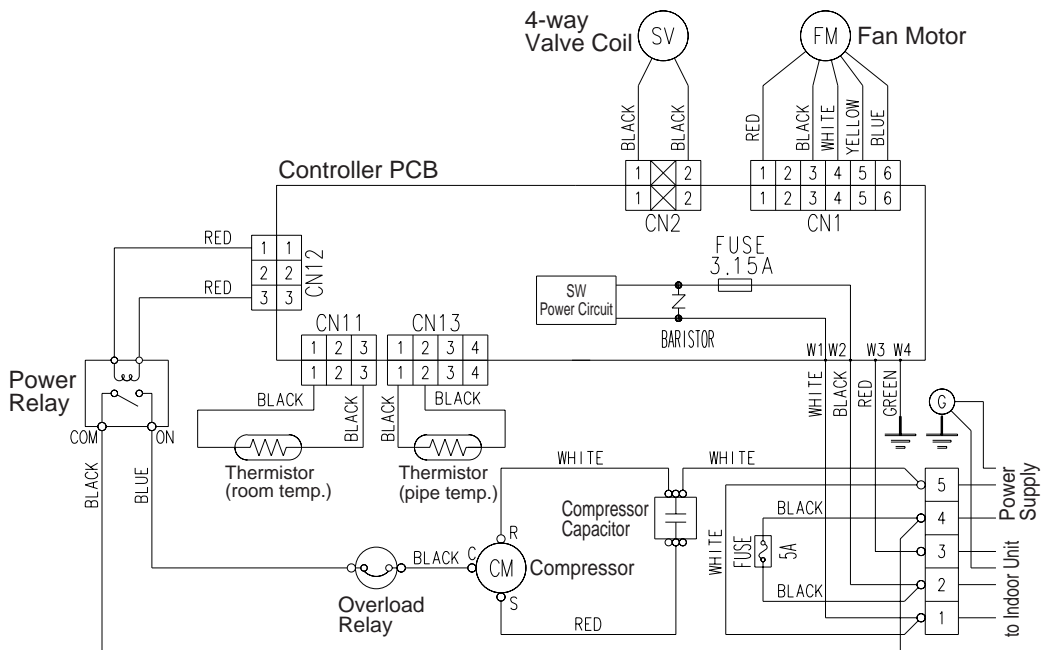
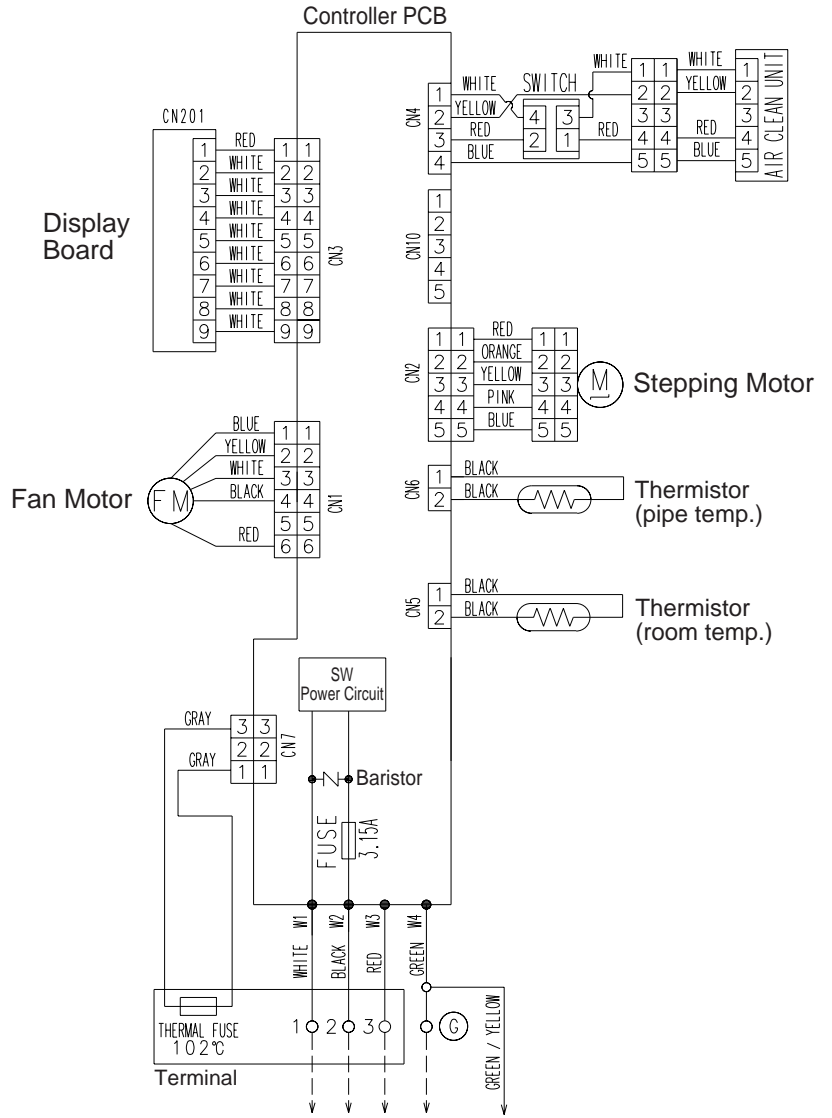
Models : ASU9RQ / AOU9RQ
 ASU12RQ / AOU12RQ



Cooling →
 Heating - ->

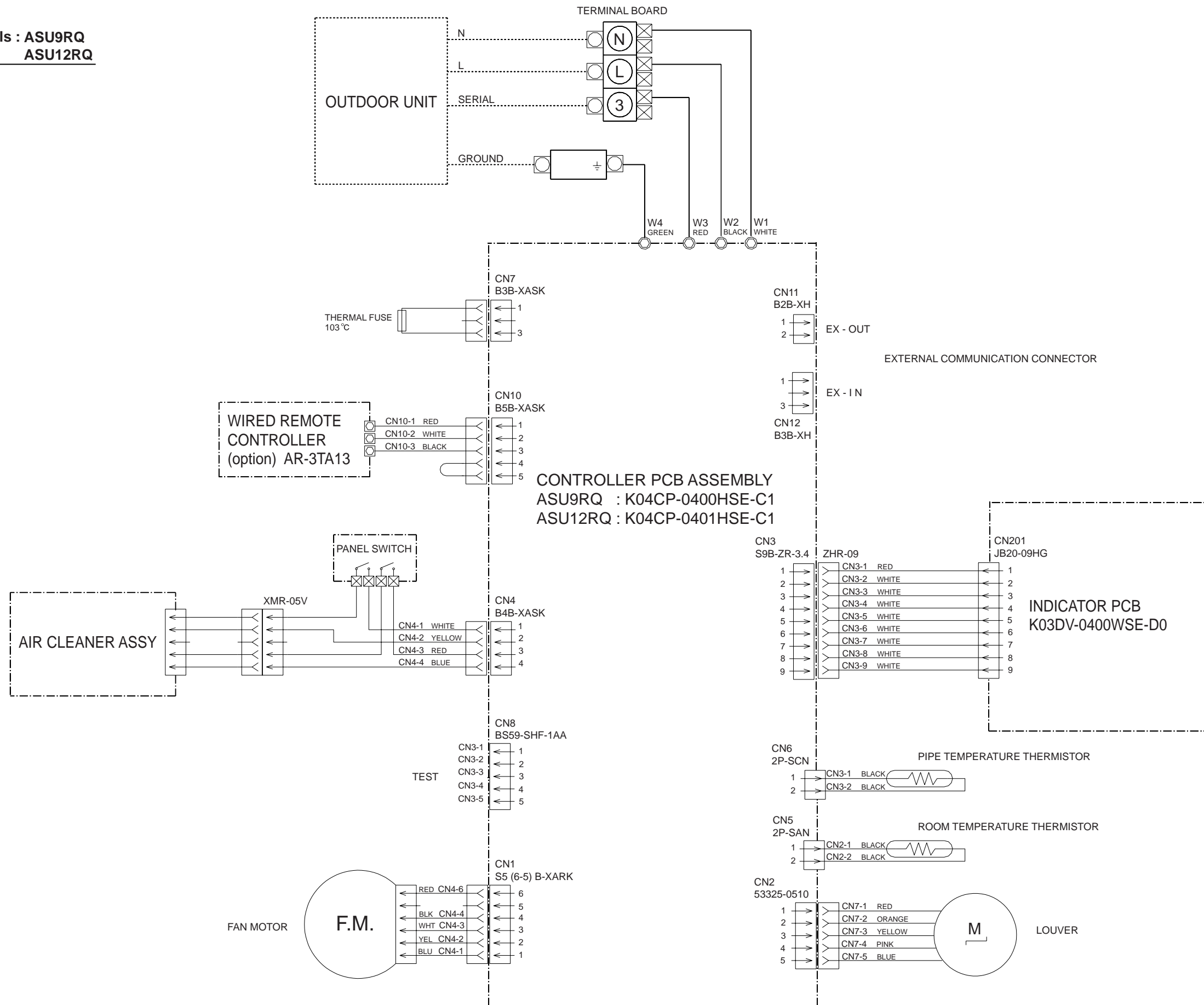
CIRCUIT DIAGRAM

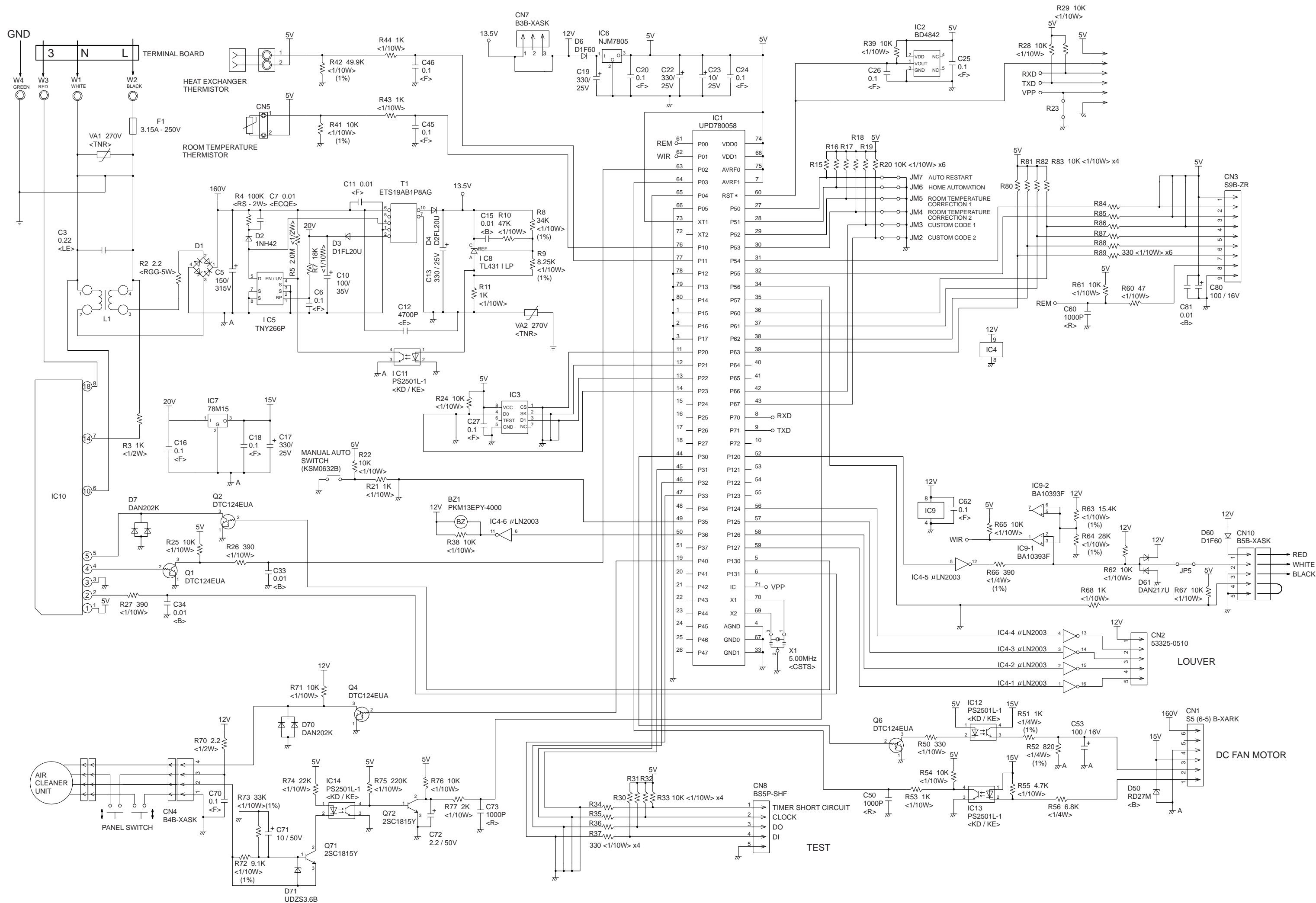
Models : ASU9RQ / AOU9RQ
ASU12RQ / AOU12RQ



INDOOR PCIRCUITB CIRCUIT DIAGRAM

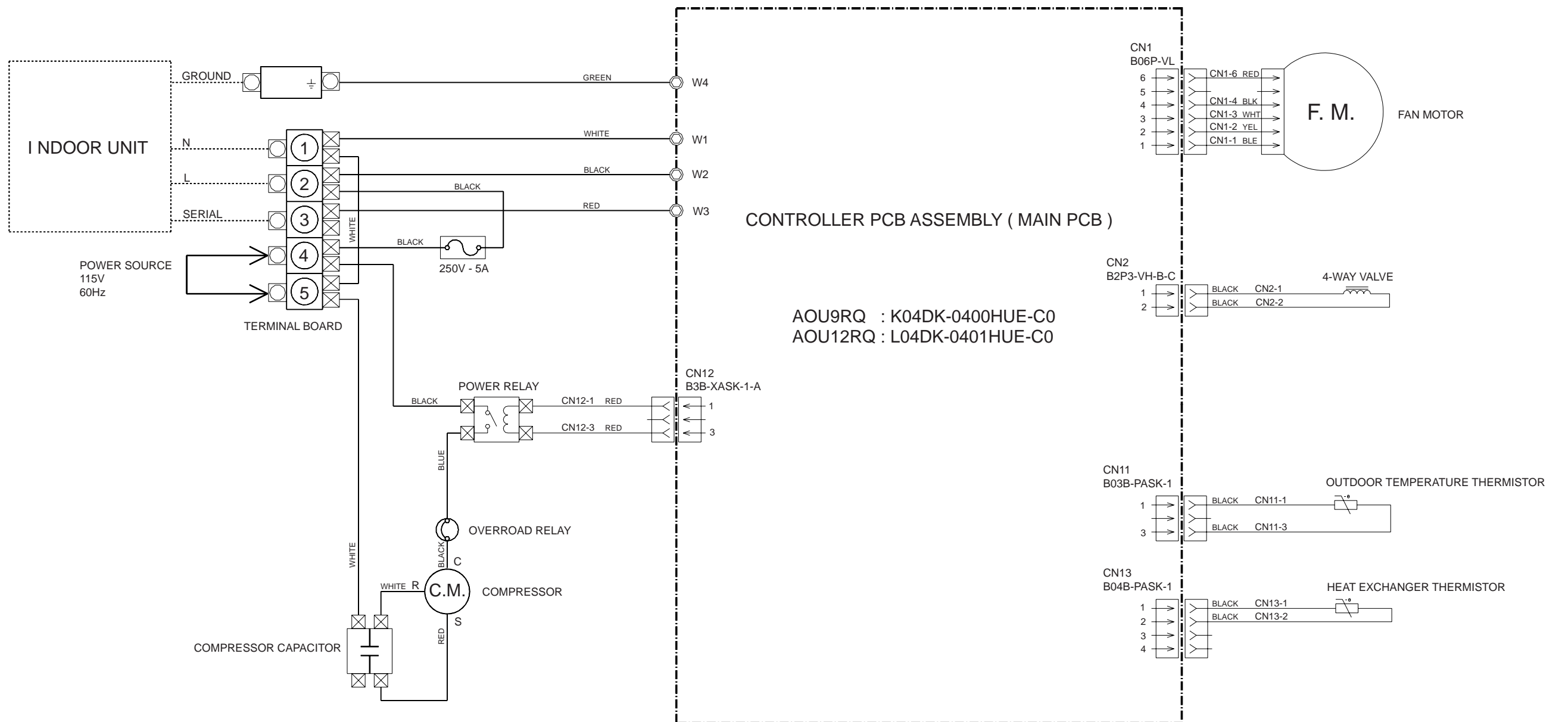
Models : ASU9RQ
ASU12RQ





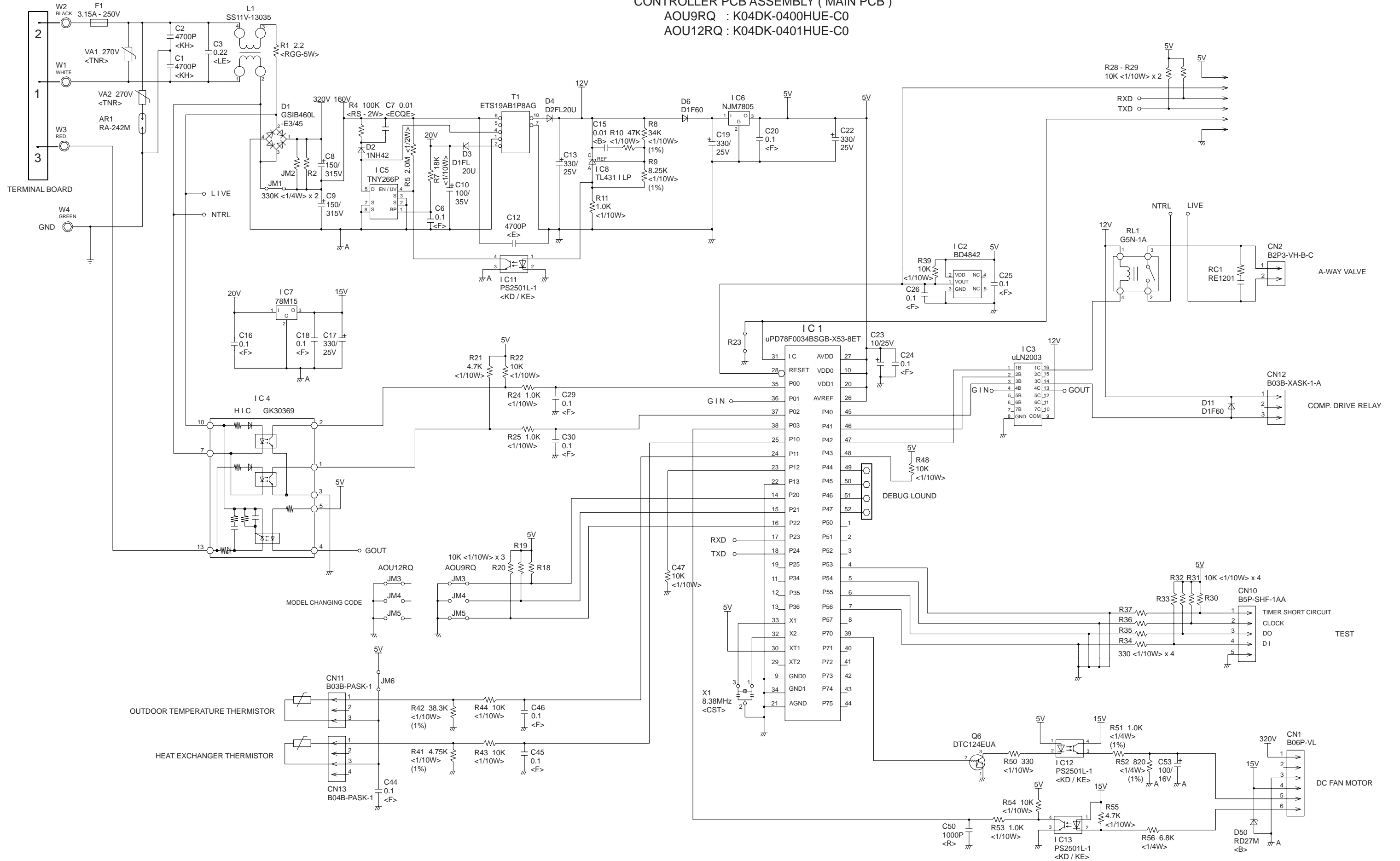
OUTDOOR PRINTED CIRCUIT BOARD CIRCUIT DIAGRAM

Models : AOU9RQ
AOU12RQ



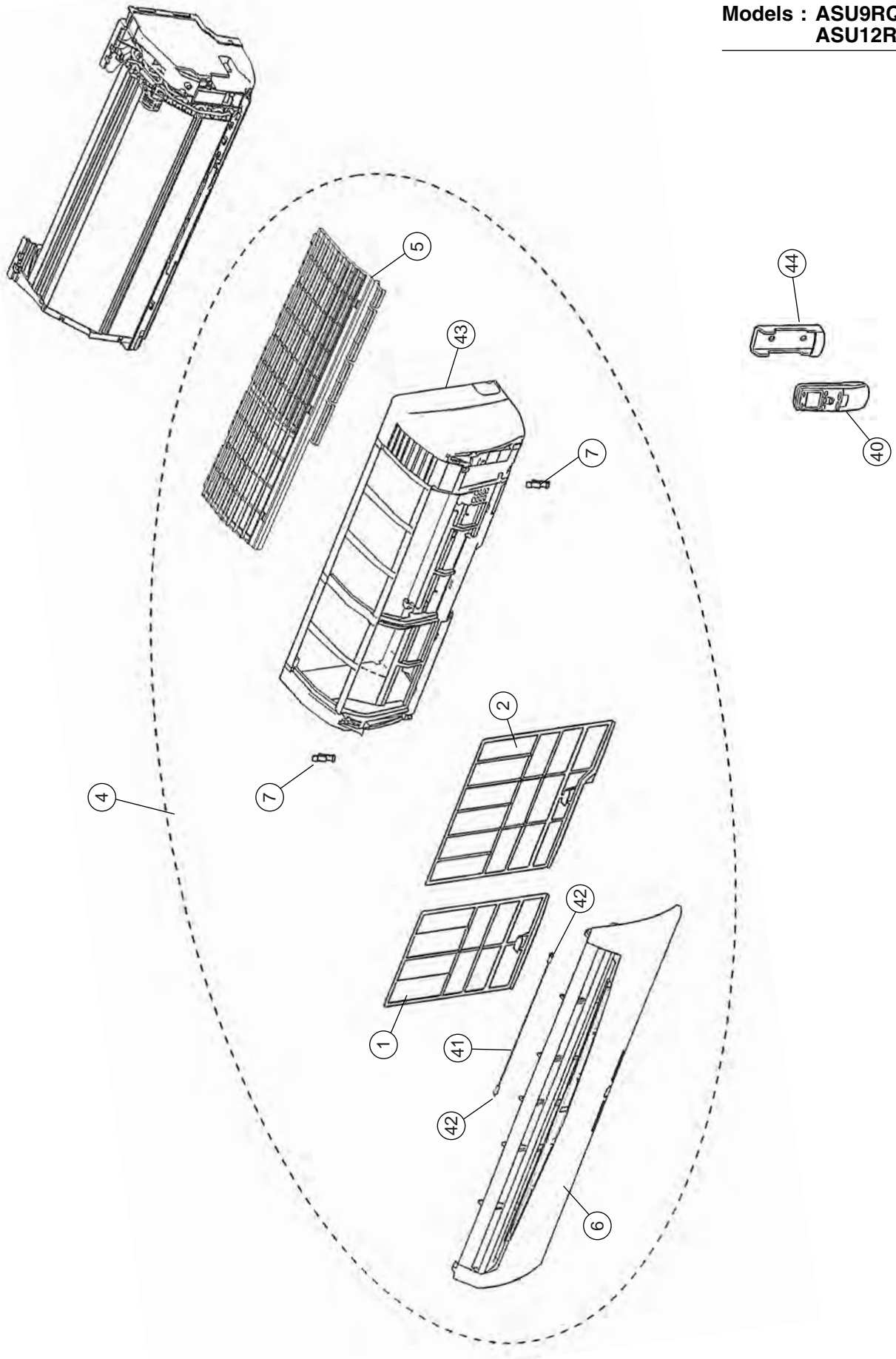
Models : AOU9RQ
AOU12RQ

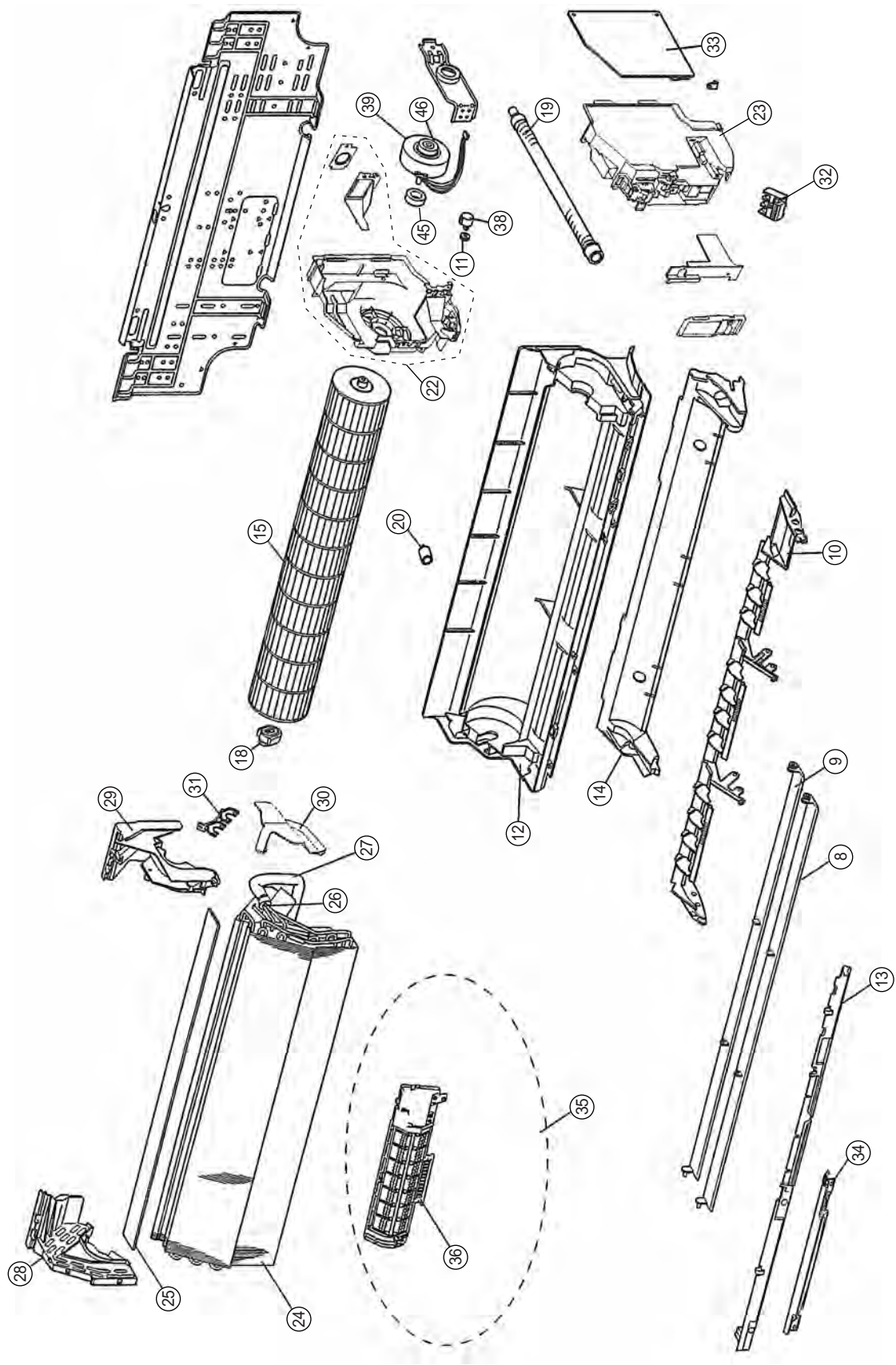
CONTROLLER PCB ASSEMBLY (MAIN PCB)
AOU9RQ : K04DK-0400HUE-C0
AOU12RQ : K04DK-0401HUE-C0



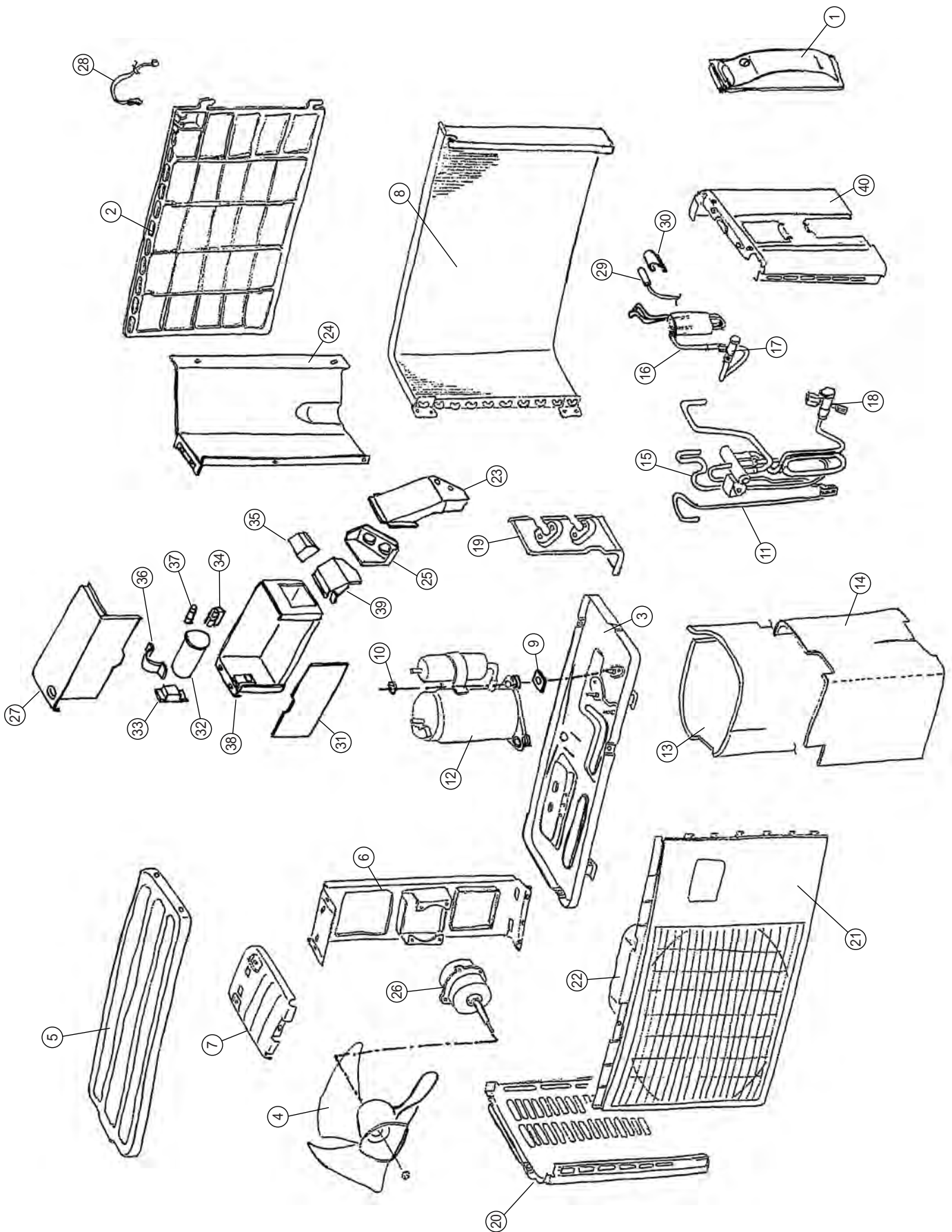
DISASSEMBLY ILLUSTRATION

Models : ASU9RQ
ASU12RQ





Models : AOU9RQ
AOU12RQ



PARTS LIST

INDOOR UNIT

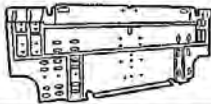

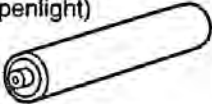


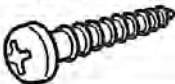

Ref. No.	Description	Part No.		Ord. Q'ty
		ASU9RQ	ASU12RQ	
1	Air Filter L	9312920013	9312920013	
2	Air Filter R	9312921010	9312921010	
4	Front Panel Total Assy	9314247019	9314247019	
5	Top Grille	9313948016	9313948016	
6	Intake Grille Assy	9313157043	9313157043	
7	Grille Clamper	9306755010	9306755010	
8	Louver U	9309991033	9309991033	
9	Louver Z	9309992030	9309992030	
10	Louver Holder	9310936016	9310936016	
11	Gear-A	9309994003	9309994003	
12	Casing Assy	9312112074	9312112074	
13	Casing Cover-F	9309987005	9309987005	
14	Casing Cover-B	9309988002	9309988002	
15	Crossflow Fan Assy	9307836015	9307836015	
18	Shaft Holder-C	9306628017	9306628017	
19	Drain Hose Assy	9310357019	9310357019	
20	Drain Cap Assy	9303544013	9303544013	
22	Switch Box Assy	9314245015	9314245015	
23	Box Switch	9313943011	9313943011	
24	Evaporator Total Assy	9313099015	9313099015	
25	Evaporator Seal	9310611005	9310611005	
26	Joint Pipe Assy	9313104016	9313104016	
27	Insulation (Pipe)-E	9304607007	9304607007	
28	Holder (Evaporator)-L	9312360024	9312360024	
29	Holder (Evaporator)-R	9309983014	9309983014	
30	Water Seal	9312912018	9312912018	
31	Evaporator Bracket	9310464007	9310464007	
32	Terminal	9701955114	9701955114	
33	Controlle PCB Assy	9705712010	9705712027	
34	Display PCB Assy	(K04CP-0400HSE-C1) 9705375024	(K04CP-0401HSE-C1) 9705375024	
35	Air Cleaner Assy	9313148034	9313148034	
36	Air Cleaner Cartridge	9312966035	9312966035	
38	Stepping Motor	9900139025	9900139025	
39	Fan Motor Assy	9601846017	9601846017	
40	Remote Control Unit	9313693039	9313693039	
41	Grille Guard	9314249013	9314249013	
42	Bushing	9313949013	9313949013	
43	Front Panel	9312914029	9312914029	
44	Remote Control Unit Holder	9305642014	9305642014	
45	Motor Cushion-N	9312979011	9312979011	
46	Motor Cushion-NR	9313168018	9313168018	

When you order parts, please make a photocopy of this page and fill the number of the parts in the "Order" column.

OUTDOOR UNIT

Ref. No.	Description	Part No.		Ord. Q'ty
		AOU9RQ	AOU12RQ	
1	Cover (Switch)	9313940010	9313940010	
2	Protective Net	9313941017	9313941017	
3	Base Assy, Painted	9313987015	9313987015	
4	Propeller Fan	9313808013	9313808013	
5	Panel (Top), Painted	9313989026	9313989026	
6	Motor Bracket	9313812010	9313812010	
7	Rem Plate	9313813017	9313813017	
8	Condenser Total Assy	9314219016	9314185014	
9	Spacer (Rubber)	9314713019	9314713019	
10	Nut Special Assy	9313437008	9313437008	
11	Solenoid	9970048012	9970048012	
12	Compressor Assy	9314228018	9314200014	
13	Noise Ins A	9314417023	9314417023	
14	Noise Ins B	9314530012	9314530012	
15	4-Way Valve Assy	9314194016	9314194016	
16	Capillary Assy	9314225017	9314192012	
17	2-Way Valve Assy	9314554018	9314554018	
18	3-Way Valve Assy	9314022012	9314022012	
19	Bracket (Valve)	9310229026	9310229026	
20	Cabinet Lfet, Painted	9313992019	9313992019	
21	Panel (Front)	9313806026	9313806026	
22	Ring (Fan)	9313807016	9313807016	
23	Cover Terminal C	9313939014	9313939014	
24	Separater C	9313934019	9313934019	
25	Bracket Conduit	9313938017	9313938017	
26	Motor, DC Brushless	9601847014	9601847014	
27	Control Cover	9313936013	9313936013	
28	Thermistor (Outdoor temp)	9900210038	9900210038	
29	Heat Exchngr Thermistor	9900307011	9900307011	
30	Thermistort Spring	9300089012	9300089012	
31	Pwb Assy	9705717015	9705717022	
32	Capacitor Plastic	9307588167	9307588167	
33	Relay	9900262013	9900262013	
34	Fuse Holder	0501456016	0501456016	
35	Terminal	9703874024	9703874024	
36	Clamp Metal (Capacitor)	313468061808	313468061808	
37	Fuse	0600372163	0600372163	
38	Control Box Assy	9314293016	9314293016	
39	Bracket Terminal	9313937010	9313937010	
40	Cabinet Right, Painted	9313995027	9313995027	

STANDARD ACCESSORIES

Name and Shape	Q'ty	Use
Wall hook bracket 	1	For indoor unit installation 9310001004
Remote control unit 	1	Use for air conditioner operation 9313693039
Battery (penlight) 	1	For remote control unit 0600185534
Cloth tape 	1	For indoor unit installation 9308117007
Remote control unit holder 	1	Use as remote control unit holder 9305642014
Tapping screw (big) (ø4 × 20) 	8	For wall hook bracket installation 0700076046
Tapping screw (small) (ø3 × 12) 	2	For remote control unit holder installation 0700019036

Parts Orders

Parts maybe ordered from

FUJITSU GENERAL AMERICA, INC

353 RTE 46 W.

FAIRFIELD NJ 07004 PHONE 1-973-575-0380

FAX 1-973-575-2194

Specify complete Parts No., Model & Description to ensure correct parts are supplied.

FUJITSU GENERAL AMERICA, INC.
353 ROUTE 46W., FAIRFIELD, N.J. 07004

0412G2715